



# Tetranectin Polyclonal Antibody

<b>Catalog No</b>	BYab-10709
<b>Isotype</b>	IgG
<b>Reactivity</b>	Human;Mouse
<b>Applications</b>	IHC;IF;ELISA
<b>Gene Name</b>	CLEC3B TNA
<b>Protein Name</b>	Tetranectin (TN) (C-type lectin domain family 3 member B) (Plasminogen kringle 4-binding protein)
<b>Immunogen</b>	Synthetic peptide from human protein at AA range: 11-60
<b>Specificity</b>	The antibody detects endogenous Tetranectin
<b>Formulation</b>	Liquid in PBS containing 50% glycerol, 0.5% BSA and 0.02% sodium azide.
<b>Source</b>	Polyclonal, Rabbit,IgG
<b>Purification</b>	The antibody was affinity-purified from rabbit antiserum by affinity-chromatography using epitope-specific immunogen.
<b>Dilution</b>	IHC-p 1:50-200, ELISA 1:10000-20000. IF 1:50-200
<b>Concentration</b>	1 mg/ml
<b>Purity</b>	≥90%
<b>Storage Stability</b>	-20°C/1 year
<b>Synonyms</b>	Tetranectin (TN;C-type lectin domain family 3 member B;Plasminogen kringle 4-binding protein)
<b>Observed Band</b>	
<b>Cell Pathway</b>	Secreted.
<b>Tissue Specificity</b>	Found in plasma.
<b>Function</b>	function:Tetranectin binds to plasminogen and to isolated kringle 4. May be involved in the packaging of molecules destined for exocytosis.,mass spectrometry: PubMed:10614823,online information:Tetranectin,similarity:Contains 1 C-type lectin domain.,subunit:Homotrimer.,tissue specificity:Found in plasma.,
<b>Background</b>	function:Tetranectin binds to plasminogen and to isolated kringle 4. May be involved in the packaging of molecules destined for exocytosis.,mass spectrometry: PubMed:10614823,online information:Tetranectin,similarity:Contains 1 C-type lectin domain.,subunit:Homotrimer.,tissue specificity:Found in plasma.,

Nanjing BYabscience technology Co.,Ltd



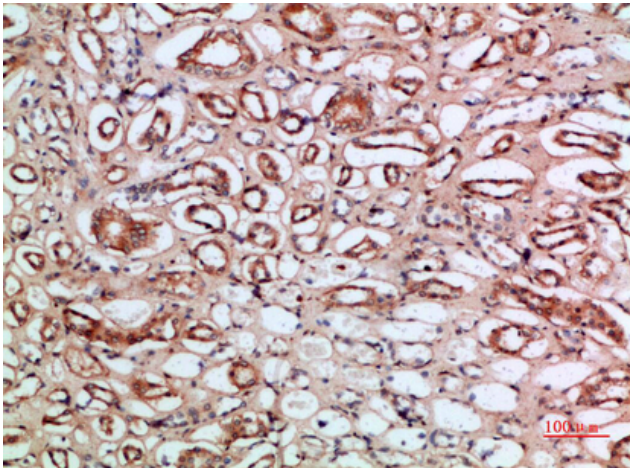
**matters needing attention**

Avoid repeated freezing and thawing!

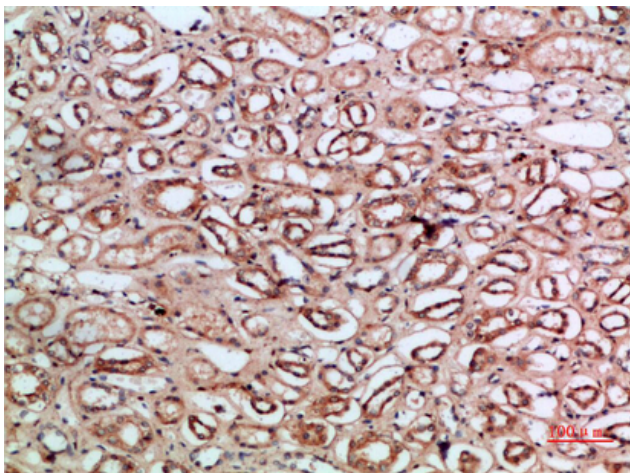
**Usage suggestions**

This product can be used in immunological reaction related experiments. For more information, please consult technical personnel.

**Products Images**



Immunohistochemical analysis of paraffin-embedded human-kidney, antibody was diluted at 1:200



Immunohistochemical analysis of paraffin-embedded human-kidney, antibody was diluted at 1:200