



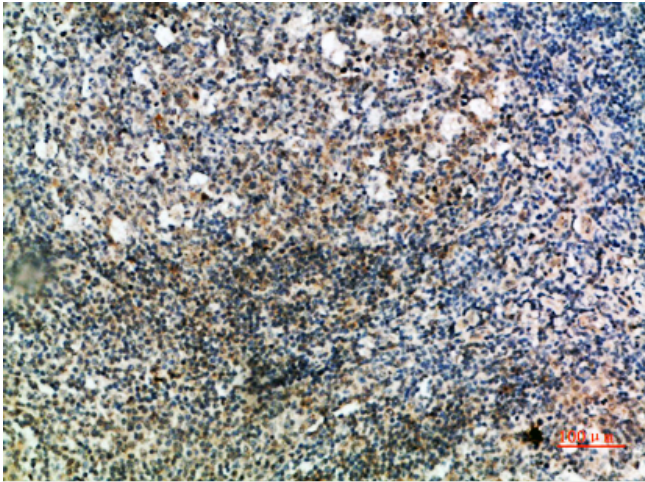
IgD Polyclonal Antibody

Catalog No	BYab-10705
Isotype	IgG
Reactivity	Human;Rat;Mouse;
Applications	IHC;IF;ELISA
Gene Name	IGHD
Protein Name	Ig delta chain C region
Immunogen	Synthetic peptide from human protein at AA range: 111-160
Specificity	The antibody detects endogenous IgD
Formulation	Liquid in PBS containing 50% glycerol, 0.5% BSA and 0.02% sodium azide.
Source	Polyclonal, Rabbit,IgG
Purification	The antibody was affinity-purified from rabbit antiserum by affinity-chromatography using epitope-specific immunogen.
Dilution	IHC-p 1:50-200, ELISA 1:10000-20000. IF 1:50-200
Concentration	1 mg/ml
Purity	≥90%
Storage Stability	-20°C/1 year
Synonyms	Ig delta chain C region
Observed Band	
Cell Pathway	[Isoform 1]: Secreted .; [Isoform 2]: Cell membrane; Single-pass type I membrane protein .
Tissue Specificity	B-cell,Liver,Plasma,Spleen,
Function	similarity:Contains 3 Ig-like (immunoglobulin-like) domains.,
Background	similarity:Contains 3 Ig-like (immunoglobulin-like) domains.,
matters needing attention	Avoid repeated freezing and thawing!
Usage suggestions	This product can be used in immunological reaction related experiments. For more information, please consult technical personnel.

Nanjing BYabscience technology Co.,Ltd



Products Images



Immunohistochemical analysis of paraffin-embedded human-tonsil, antibody was diluted at 1:200