



IL-27A Polyclonal Antibody

| | |
|---------------------------|---|
| Catalog No | BYab-10701 |
| Isotype | IgG |
| Reactivity | Human;Mouse;Rat |
| Applications | IHC;IF;ELISA |
| Gene Name | IL27 IL27A |
| Protein Name | Interleukin-27 subunit alpha (IL-27 subunit alpha) (IL-27-A) (IL27-A) (p28) |
| Immunogen | Synthetic peptide from human protein at AA range: 1-50 |
| Specificity | The antibody detects endogenous IL-27A |
| Formulation | Liquid in PBS containing 50% glycerol, 0.5% BSA and 0.02% sodium azide. |
| Source | Polyclonal, Rabbit,IgG |
| Purification | The antibody was affinity-purified from rabbit antiserum by affinity-chromatography using epitope-specific immunogen. |
| Dilution | IHC-p 1:50-200, ELISA 1:10000-20000. IF 1:50-200 |
| Concentration | 1 mg/ml |
| Purity | ≥90% |
| Storage Stability | -20°C/1 year |
| Synonyms | Interleukin-27 subunit alpha (IL-27 subunit alpha;IL-27-A;IL27-A;p28) |
| Observed Band | |
| Cell Pathway | Secreted . Does not seem to be secreted without coexpression of EBI3. |
| Tissue Specificity | Expressed in monocytes and in placenta. |
| Function | function:Cytokine with pro- and anti-inflammatory properties, that can regulate T helper cell development, suppress T-cell proliferation, stimulate cytotoxic T cell activity, induce isotype switching in B-cells, and that has diverse effects on innate immune cells. Among its target cells are CD4 T helper cells which can differentiate in type 1 effector cells (TH1), type 2 effector cells (TH2) and IL17 producing helper T-cells (TH17). It drives rapid clonal expansion of naive but not memory CD4 T-cells. It also strongly synergizes with IL-12 to trigger interferon-gamma/IFN-gamma production of naive CD4 T-cells, binds to the cytokine receptor WSX-1/TCCR which appears to be required but not sufficient for IL-27-mediated signal transduction. IL-27 potentiate the early phase of TH1 response and suppress TH2 and TH17 differentiation. It induces the differentiation of TH1 cells via two distinct |

Nanjing BYabscience technology Co.,Ltd



Background

The protein encoded by this gene is one of the subunits of a heterodimeric cytokine complex. This protein is related to interleukin 12A (IL12A). It interacts with Epstein-Barr virus induced gene 3 (EBI3), a protein similar to interleukin 12B (IL12B), and forms a complex that has been shown to drive rapid expansion of naive but not memory CD4(+) T cells. The complex is also found to synergize strongly with interleukin 12 to trigger interferon gamma (IFNG) production of naive CD4(+) T cells. The biological effects of this cytokine are mediated by the class I cytokine receptor (WSX1/TCRR). [provided by RefSeq, Jul 2008],

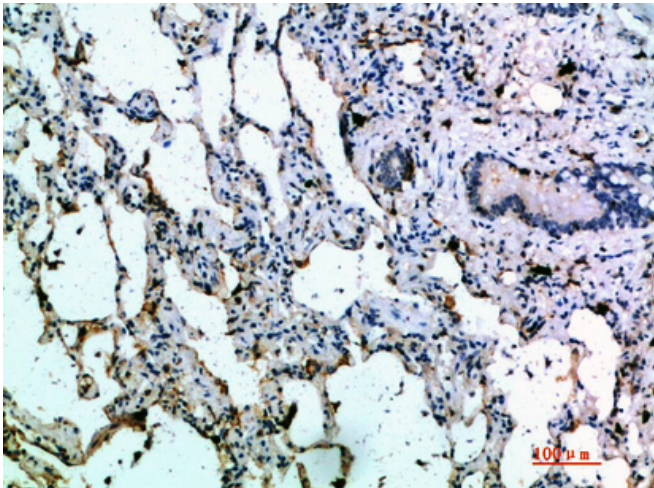
matters needing attention

Avoid repeated freezing and thawing!

Usage suggestions

This product can be used in immunological reaction related experiments. For more information, please consult technical personnel.

Products Images



Immunohistochemical analysis of paraffin-embedded human-lung, antibody was diluted at 1:200