



IFN- β Polyclonal Antibody

Catalog No	BYab-10694
Isotype	IgG
Reactivity	Human;Rat;Mouse;
Applications	IHC;IF;ELISA
Gene Name	IFNB1 IFB IFNB
Protein Name	Interferon beta (IFN-beta) (Fibroblast interferon)
Immunogen	Synthetic peptide from human protein at AA range: 91-140
Specificity	The antibody detects endogenous IFN- β
Formulation	Liquid in PBS containing 50% glycerol, 0.5% BSA and 0.02% sodium azide.
Source	Polyclonal, Rabbit,IgG
Purification	The antibody was affinity-purified from rabbit antiserum by affinity-chromatography using epitope-specific immunogen.
Dilution	IHC-p 1:50-200, ELISA 1:10000-20000. IF 1:50-200
Concentration	1 mg/ml
Purity	$\geq 90\%$
Storage Stability	-20°C/1 year
Synonyms	Interferon beta (IFN-beta;Fibroblast interferon)
Observed Band	
Cell Pathway	Secreted.
Tissue Specificity	PCR rescued clones,
Function	function:Has antiviral, antibacterial and anticancer activities.,online information:Clinical information on Avonex,online information:Clinical information on Betaseron,pharmaceutical:Available under the names Avonex (Biogen), Betaseron (Berlex) and Rebif (Serono). Used in the treatment of multiple sclerosis (MS). Betaseron is a slightly modified form of IFNB1 with two residue substitutions.,similarity:Belongs to the alpha/beta interferon family.,subunit:Monomer.,
Background	This gene encodes a cytokine that belongs to the interferon family of signaling proteins, which are released as part of the innate immune response to pathogens. The protein encoded by this gene belongs to the type I class of interferons, which are important for defense against viral infections. In addition, type I interferons are

Nanjing BYabscience technology Co.,Ltd



involved in cell differentiation and anti-tumor defenses. Following secretion in response to a pathogen, type I interferons bind a homologous receptor complex and induce transcription of genes such as those encoding inflammatory cytokines and chemokines. Overactivation of type I interferon secretion is linked to autoimmune diseases. Mice deficient for this gene display several phenotypes including defects in B cell maturation and increased susceptibility to viral infection. [provided by RefSeq, Sep 2015],

matters needing attention

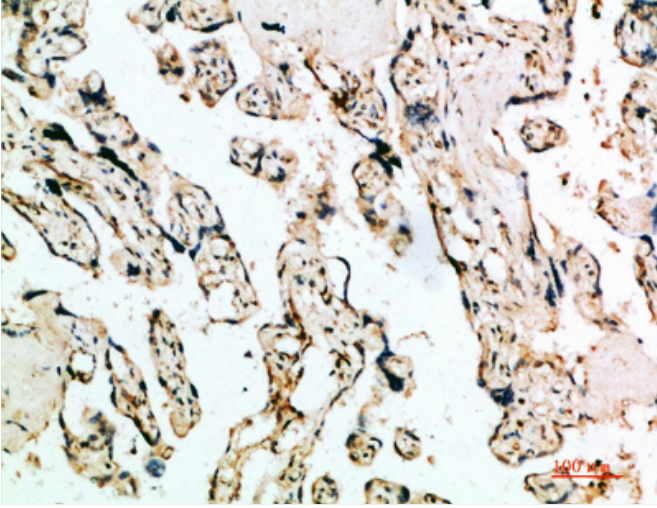
Avoid repeated freezing and thawing!

Usage suggestions

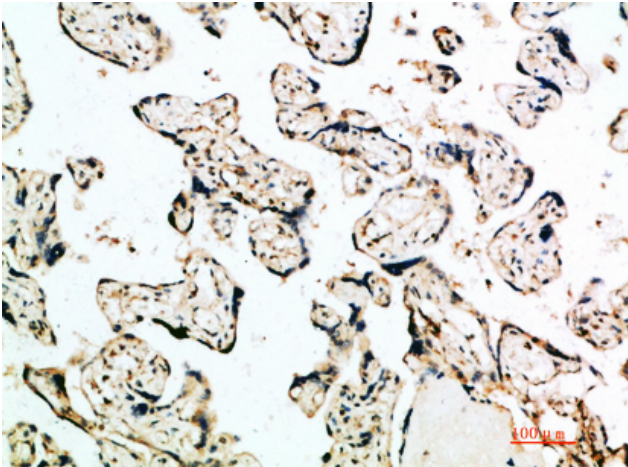
This product can be used in immunological reaction related experiments. For more information, please consult technical personnel.



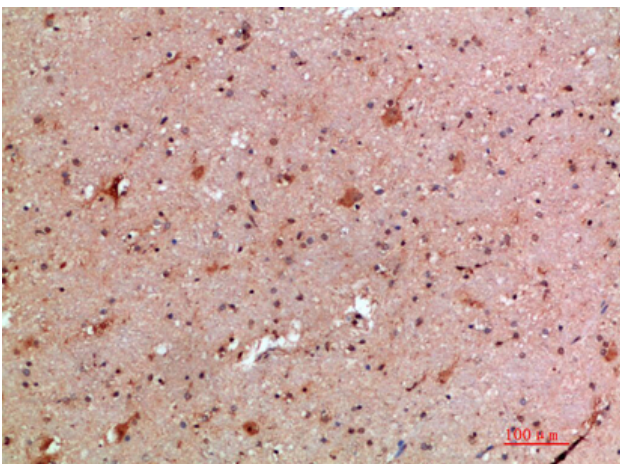
Products Images



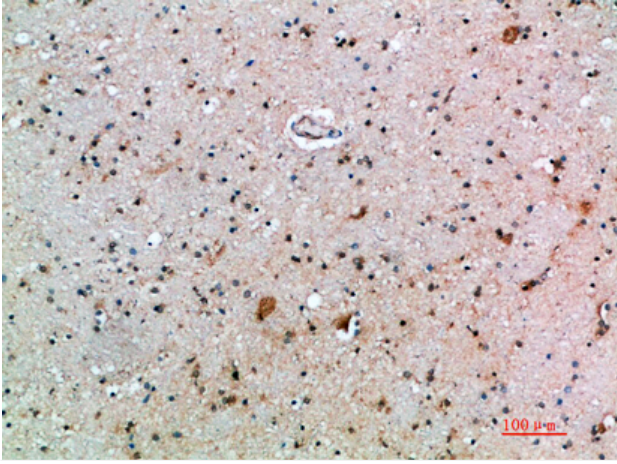
Immunohistochemical analysis of paraffin-embedded human-placenta, antibody was diluted at 1:200



Immunohistochemical analysis of paraffin-embedded human-placenta, antibody was diluted at 1:200



Immunohistochemical analysis of paraffin-embedded human-brain, antibody was diluted at 1:200



Immunohistochemical analysis of paraffin-embedded human-brain, antibody was diluted at 1:200