



NNT-1 Polyclonal Antibody

Catalog No	BYab-10689
Isotype	IgG
Reactivity	Human;Mouse;Rat
Applications	IHC;IF;ELISA
Gene Name	CLCF1 BSF3 CLC NNT1
Protein Name	Cardiotrophin-like cytokine factor 1 (B-cell-stimulating factor 3) (BSF-3) (Novel neurotrophin-1) (NNT-1)
Immunogen	Synthetic peptide from human protein at AA range: 171-220
Specificity	The antibody detects endogenous NNT-1
Formulation	Liquid in PBS containing 50% glycerol, 0.5% BSA and 0.02% sodium azide.
Source	Polyclonal, Rabbit,IgG
Purification	The antibody was affinity-purified from rabbit antiserum by affinity-chromatography using epitope-specific immunogen.
Dilution	IHC-p 1:50-200, ELISA 1:10000-20000. IF 1:50-200
Concentration	1 mg/ml
Purity	≥90%
Storage Stability	-20°C/1 year
Synonyms	Cardiotrophin-like cytokine factor 1 (B-cell-stimulating factor 3;BSF-3;Novel neurotrophin-1;NNT-1)
Observed Band	
Cell Pathway	Secreted .
Tissue Specificity	Expressed predominantly in lymph nodes, spleen, peripheral blood lymphocytes, bone marrow, and fetal liver.
Function	disease:Defects in CLCF1 are the cause of cold-induced sweating syndrome 2 (CISS2) [MIM:610313]. Cold-induced sweating syndrome (CISS) is an autosomal recessive disorder characterized by profuse sweating induced by cool surroundings (temperatures of 7 to 18 degrees Celsius). Additional abnormalities include a high-arched palate, nasal voice, depressed nasal bridge, inability to fully extend the elbows and kyphoscoliosis.,function:Cytokine with B-cell stimulating capability. Binds to and activates the ILST/gp130 receptor.,similarity:Belongs to the IL-6 superfamily.,tissue specificity:Expressed predominantly in lymph nodes, spleen, peripheral blood lymphocytes, bone marrow, and fetal liver.,

Nanjing BYabscience technology Co.,Ltd

**Background**

This gene is a member of the glycoprotein (gp)130 cytokine family and encodes cardiotrophin-like cytokine factor 1 (CLCF1). CLCF1 forms a heterodimer complex with cytokine receptor-like factor 1 (CRLF1). This dimer competes with ciliary neurotrophic factor (CNTF) for binding to the ciliary neurotrophic factor receptor (CNTFR) complex, and activates the Jak-STAT signaling cascade. CLCF1 can be actively secreted from cells by forming a complex with soluble type I CRLF1 or soluble CNTFR. CLCF1 is a potent neurotrophic factor, B-cell stimulatory agent and neuroendocrine modulator of pituitary corticotroph function. Defects in CLCF1 cause cold-induced sweating syndrome 2 (CISS2). This syndrome is characterized by a profuse sweating after exposure to cold as well as congenital physical abnormalities of the head and spine. Alternative splicing results in multiple transcript variants encodin

matters needing attention

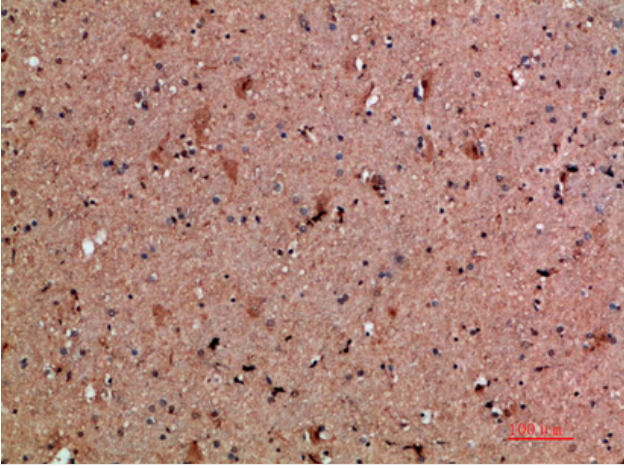
Avoid repeated freezing and thawing!

Usage suggestions

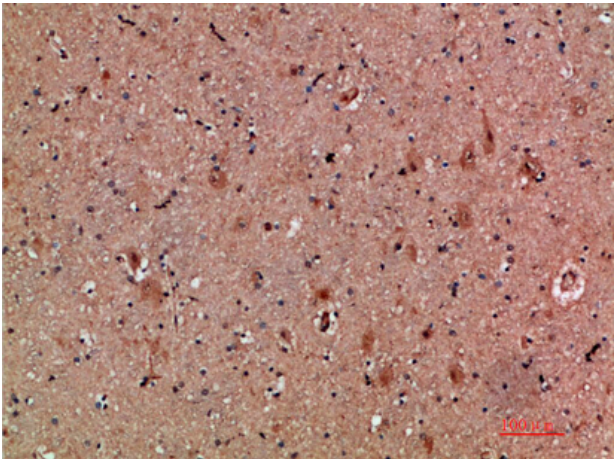
This product can be used in immunological reaction related experiments. For more information, please consult technical personnel.



Products Images



Immunohistochemical analysis of paraffin-embedded human-brain, antibody was diluted at 1:200



Immunohistochemical analysis of paraffin-embedded human-brain, antibody was diluted at 1:200