



CD300b Polyclonal Antibody

Catalog No	BYab-10682
Isotype	IgG
Reactivity	Human;Rat;Mouse;
Applications	IHC;IF;ELISA
Gene Name	CD300LB CD300B CLM7 CMRF35A2 IREM3 LMIR5 TREM5 UNQ2530/PRO6029
Protein Name	CMRF35-like molecule 7 (CLM-7) (CD300 antigen-like family member B) (CMRF35-A2) (Immune receptor expressed on myeloid cells 3) (IREM-3) (Leukocyte mono-Ig-like receptor 5) (Triggering receptor express
Immunogen	Synthetic peptide from human protein at AA range: 61-110
Specificity	The antibody detects endogenous CD300b
Formulation	Liquid in PBS containing 50% glycerol, 0.5% BSA and 0.02% sodium azide.
Source	Polyclonal, Rabbit,IgG
Purification	The antibody was affinity-purified from rabbit antiserum by affinity-chromatography using epitope-specific immunogen.
Dilution	IHC-p 1:50-200, ELISA 1:10000-20000. IF 1:50-200
Concentration	1 mg/ml
Purity	≥90%
Storage Stability	-20°C/1 year
Synonyms	CMRF35-like molecule 7 (CLM-7;CD300 antigen-like family member B;CMRF35-A2;Immune receptor expressed on myeloid cells 3;IREM-3;Leukocyte mono-Ig-like receptor 5;Triggering receptor expressed on myeloid cells 5;TREM-5;CD antigen CD300b)
Observed Band	
Cell Pathway	Cell membrane ; Single-pass type I membrane protein .
Tissue Specificity	Expressed exclusively in myeloid lineages.
Function	function:Acts as an activating immune receptor through its interaction with ITAM-bearing adapter TYROBP, and also independently by recruitment of GRB2.,PTM:Phosphorylation on Tyr-188 by FYN is required for interaction with GRB2.,similarity:Belongs to the CD300 family.,similarity:Contains 1 Ig-like V-type (immunoglobulin-like) domain.,subunit:Interacts with TYROBP, which enhances cell surface expression and activation properties. Interacts with GRB2 in the

Nanjing BYabscience technology Co.,Ltd



presence of FYN.,tissue specificity:Expressed exclusively in myeloid lineages.,

Background

CD300LB is a nonclassical activating receptor of the immunoglobulin (Ig) superfamily expressed on myeloid cells (Martinez-Barriocanal and Sayos, 2006 [PubMed 16920917]).[supplied by OMIM, Mar 2008],

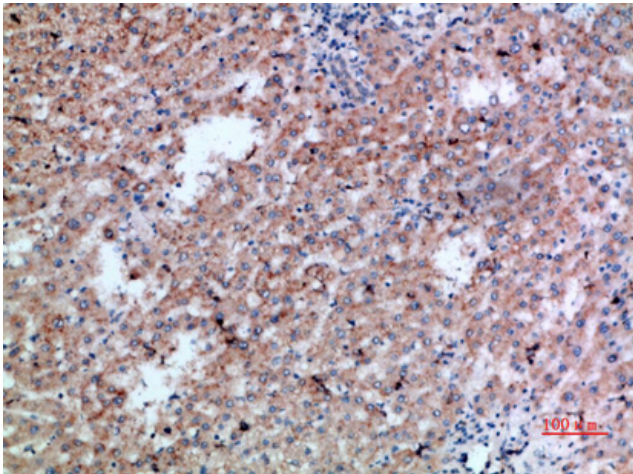
matters needing attention

Avoid repeated freezing and thawing!

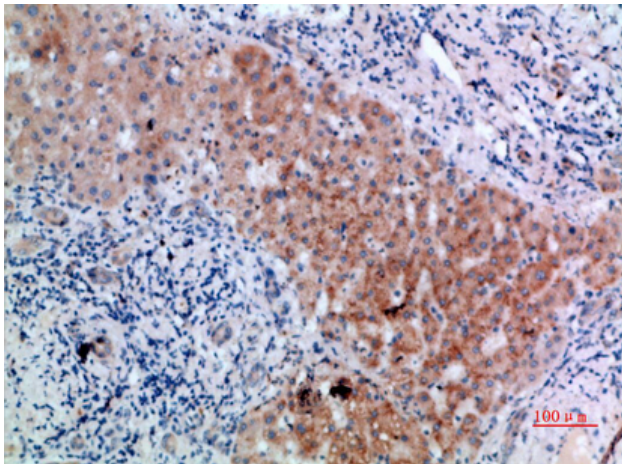
Usage suggestions

This product can be used in immunological reaction related experiments. For more information, please consult technical personnel.

Products Images



Immunohistochemical analysis of paraffin-embedded human-liver-cancer, antibody was diluted at 1:200



Immunohistochemical analysis of paraffin-embedded human-liver-cancer, antibody was diluted at 1:200