



# CD218b Polyclonal Antibody

<b>Catalog No</b>	BYab-10675
<b>Isotype</b>	IgG
<b>Reactivity</b>	Human;Rat;Mouse;
<b>Applications</b>	IHC;IF;ELISA
<b>Gene Name</b>	IL18RAP IL1R7
<b>Protein Name</b>	Interleukin-18 receptor accessory protein (IL-18 receptor accessory protein) (IL-18RAcP) (Accessory protein-like) (AcPL) (CD218 antigen-like family member B) (CDw218b) (IL-1R accessory protein-like) (
<b>Immunogen</b>	Synthetic peptide from human protein at AA range: 291-340
<b>Specificity</b>	The antibody detects endogenous CD218b
<b>Formulation</b>	Liquid in PBS containing 50% glycerol, 0.5% BSA and 0.02% sodium azide.
<b>Source</b>	Polyclonal, Rabbit,IgG
<b>Purification</b>	The antibody was affinity-purified from rabbit antiserum by affinity-chromatography using epitope-specific immunogen.
<b>Dilution</b>	IHC-p 1:50-200, ELISA 1:10000-20000. IF 1:50-200
<b>Concentration</b>	1 mg/ml
<b>Purity</b>	≥90%
<b>Storage Stability</b>	-20°C/1 year
<b>Synonyms</b>	Interleukin-18 receptor accessory protein (IL-18 receptor accessory protein;IL-18RAcP;Accessory protein-like;AcPL;CD218 antigen-like family member B;CDw218b;IL-1R accessory protein-like;IL-1RAcPL;Interleukin-1 receptor 7;IL-1R-7;IL-1R7;Interleukin-18 receptor accessory protein-like;Interleukin-18 receptor beta;IL-18R-beta;IL-18Rbeta;CD antigen CD218b)
<b>Observed Band</b>	
<b>Cell Pathway</b>	Cell membrane ; Single-pass type I membrane protein .
<b>Tissue Specificity</b>	Detected in adrenal gland, bone marrow, brain, fetal brain, fetal liver, heart, kidney, lung, liver, peripheral blood leukocytes, placenta, prostate, salivary gland, skeletal muscle, spinal cord, testis, thymus, thyroid, trachea and uterus (PubMed:17897836). Strongly expressed in peripheral blood leukocytes and spleen and, to a lesser extent, in colon (PubMed:9792649). Specifically coexpressed with IL18R1 in T-helper 1 (Th1) cells (PubMed:10925275,

**Nanjing BYabscience technology Co.,Ltd**



PubMed:11046021, PubMed:10653850).

**Function**

function:Required for the high affinity binding of interleukin 18 (IL-18) to its receptor complex (By similarity). Together with IL18R1 mediates IL-18-dependent activation of NF-kappa-B and JNK.,induction:Induced by IFN-alpha and IL-12 in natural killer (NK) cells and T-cells.,similarity:Belongs to the interleukin-1 receptor family.,similarity:Contains 1 TIR domain.,similarity:Contains 2 Ig-like C2-type (immunoglobulin-like) domains.,subunit:Together with IL18R1, probably belongs to the IL-18 receptor complex. Seems not to interact directly with IL-18.,tissue specificity:Strongly expressed in peripheral blood leukocytes, spleen, lung, and, to a lesser extent, in colon, but not in any other tissue tested. Strongly expressed in T-cells polarized with IL-12. Specifically coexpressed with IL18R1 in Th1 cells.,

**Background**

The protein encoded by this gene is an accessory subunit of the heterodimeric receptor for interleukin 18 (IL18), a proinflammatory cytokine involved in inducing cell-mediated immunity. This protein enhances the IL18-binding activity of the IL18 receptor and plays a role in signaling by IL18. Mutations in this gene are associated with Crohn's disease and inflammatory bowel disease, and susceptibility to celiac disease and leprosy. Alternatively spliced transcript variants of this gene have been described, but their full-length nature is not known. [provided by RefSeq, Feb 2014],

**matters needing attention**

Avoid repeated freezing and thawing!

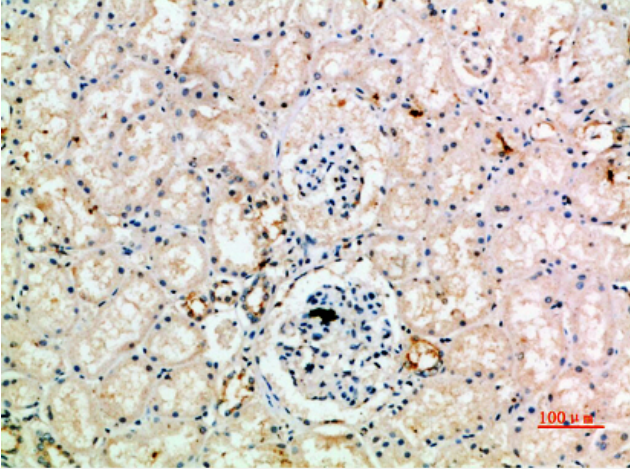
**Usage suggestions**

This product can be used in immunological reaction related experiments. For more information, please consult technical personnel.

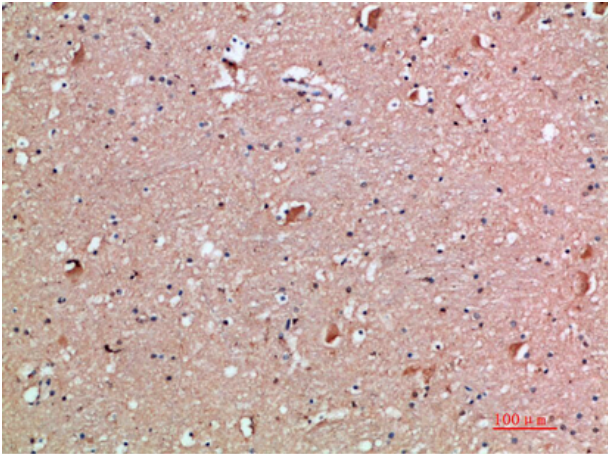
Nanjing BYabscience technology Co.,Ltd



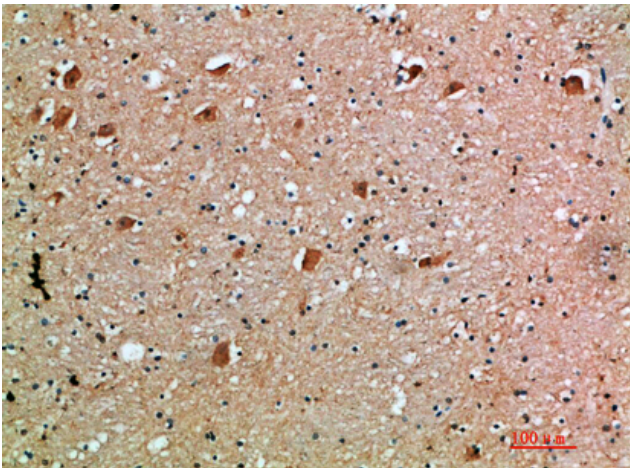
## Products Images



Immunohistochemical analysis of paraffin-embedded human-kidney, antibody was diluted at 1:200



Immunohistochemical analysis of paraffin-embedded human-brain, antibody was diluted at 1:200



Immunohistochemical analysis of paraffin-embedded human-brain, antibody was diluted at 1:200