



# CD300e Polyclonal Antibody

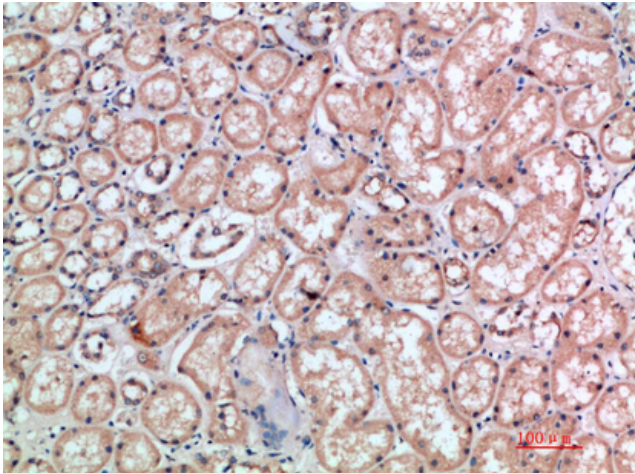
<b>Catalog No</b>	BYab-10672
<b>Isotype</b>	IgG
<b>Reactivity</b>	Human;Rat;Mouse;
<b>Applications</b>	IHC;IF;ELISA
<b>Gene Name</b>	CD300E CD300LE CLM2 CMRF35A5 IREM2
<b>Protein Name</b>	CMRF35-like molecule 2 (CLM-2) (CD300 antigen-like family member E) (CMRF35-A5) (Immune receptor expressed on myeloid cells 2) (IREM-2) (Polymeric immunoglobulin receptor 2) (PIgR-2) (PIgR2) (Poly-Ig
<b>Immunogen</b>	Synthetic peptide from human protein at AA range: 31-80
<b>Specificity</b>	The antibody detects endogenous CD300e
<b>Formulation</b>	Liquid in PBS containing 50% glycerol, 0.5% BSA and 0.02% sodium azide.
<b>Source</b>	Polyclonal, Rabbit,IgG
<b>Purification</b>	The antibody was affinity-purified from rabbit antiserum by affinity-chromatography using epitope-specific immunogen.
<b>Dilution</b>	IHC-p 1:50-200, ELISA 1:10000-20000. IF 1:50-200
<b>Concentration</b>	1 mg/ml
<b>Purity</b>	≥90%
<b>Storage Stability</b>	-20°C/1 year
<b>Synonyms</b>	CMRF35-like molecule 2 (CLM-2;CD300 antigen-like family member E;CMRF35-A5;Immune receptor expressed on myeloid cells 2;IREM-2;Polymeric immunoglobulin receptor 2;PIgR-2;PIgR2;Poly-Ig receptor 2;CD antigen CD300e)
<b>Observed Band</b>	
<b>Cell Pathway</b>	Cell membrane; Single-pass type I membrane protein.
<b>Tissue Specificity</b>	Present on the surface of mature hematopoietic cells of the monocyte and myeloid lineages (at protein level).
<b>Function</b>	function:Probably acts as an activating receptor.,PTM:N-glycosylated.,similarity:Belongs to the CD300 family.,similarity:Contains 1 Ig-like V-type (immunoglobulin-like) domain.,subunit:Interacts with TYROBP.,tissue specificity:Present on the surface of mature hematopoietic cells of the monocyte and myeloid lineages (at protein level).,

Nanjing BYabscience technology Co.,Ltd

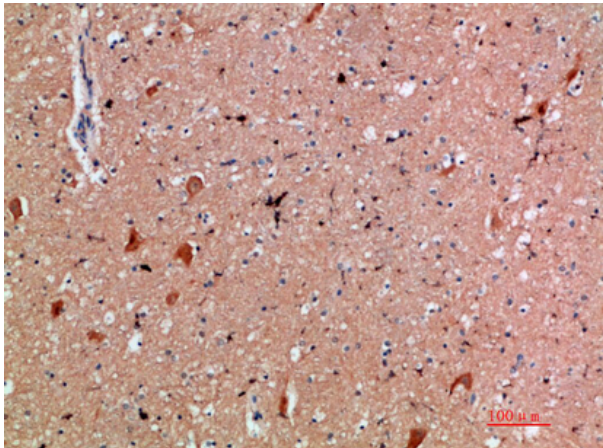


<b>Background</b>	CD300e molecule(CD300E) Homo sapiens This gene encodes a member of the CD300 glycoprotein family of cell surface proteins expressed on myeloid cells. The protein interacts with the TYRO protein tyrosine kinase-binding protein and is thought to act as an activating receptor. [provided by RefSeq, Nov 2012],
<b>matters needing attention</b>	Avoid repeated freezing and thawing!
<b>Usage suggestions</b>	This product can be used in immunological reaction related experiments. For more information, please consult technical personnel.

## Products Images



Immunohistochemical analysis of paraffin-embedded human-kidney, antibody was diluted at 1:200



Immunohistochemical analysis of paraffin-embedded human-brain, antibody was diluted at 1:200