



CD303 Polyclonal Antibody

Catalog No	BYab-10669
Isotype	IgG
Reactivity	Human;Rat;Mouse;
Applications	IHC;IF;ELISA
Gene Name	CLEC4C BDCA2 CLECSF11 CLECSF7 DLEC HECL UNQ9361/PRO34150
Protein Name	C-type lectin domain family 4 member C (Blood dendritic cell antigen 2) (BDCA-2) (C-type lectin superfamily member 7) (Dendritic lectin) (CD antigen CD303)
Immunogen	Synthetic peptide from human protein at AA range: 91-140
Specificity	The antibody detects endogenous CD303
Formulation	Liquid in PBS containing 50% glycerol, 0.5% BSA and 0.02% sodium azide.
Source	Polyclonal, Rabbit,IgG
Purification	The antibody was affinity-purified from rabbit antiserum by affinity-chromatography using epitope-specific immunogen.
Dilution	IHC-p 1:50-200, ELISA 1:10000-20000. IF 1:50-200
Concentration	1 mg/ml
Purity	≥90%
Storage Stability	-20°C/1 year
Synonyms	C-type lectin domain family 4 member C (Blood dendritic cell antigen 2;BDCA-2;C-type lectin superfamily member 7;Dendritic lectin;CD antigen CD303)
Observed Band	
Cell Pathway	Cell membrane ; Single-pass type II membrane protein .
Tissue Specificity	Expressed in plasmacytoid dendritic cells (PDCs). Constitutively expressed in immature monocyte-derived dendritic cells (iMDDC) and is significantly down-regulated upon maturation with LPS but not with TNF-alpha.
Function	function:Involved in antigen-capturing. Target ligand into antigen processing and peptide-loading compartments for presentation to T-cells. May mediate potent inhibition of induction of IFN-alpha/beta expression in plasmacytoid dendritic cells. May act as a signaling receptor that activates protein-tyrosine kinases and mobilizes intracellular calcium. Does not seem to bind mannose.,online information:BDCA-2,similarity:Contains 1 C-type lectin domain.,tissue specificity:Expressed in plasmacytoid dendritic cells (PDCs). Constitutively expressed in immature monocyte-derived dendritic cells (iMDDC) and is

Nanjing BYabscience technology Co.,Ltd



significantly down-regulated upon maturation with LPS but not with TNF-alpha.,

Background

This gene encodes a member of the C-type lectin/C-type lectin-like domain (CTL/CTLD) superfamily. Members of this family share a common protein fold and have diverse functions, such as cell adhesion, cell-cell signalling, glycoprotein turnover, and roles in inflammation and immune response. The encoded type 2 transmembrane protein may play a role in dendritic cell function. Two transcript variants encoding distinct isoforms have been identified for this gene. [provided by RefSeq, Jul 2008],

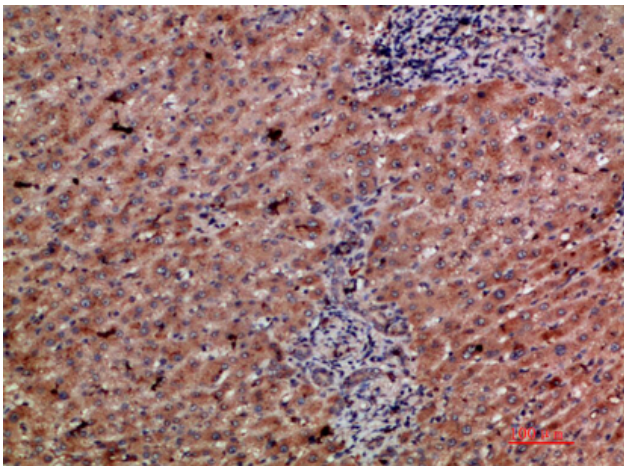
matters needing attention

Avoid repeated freezing and thawing!

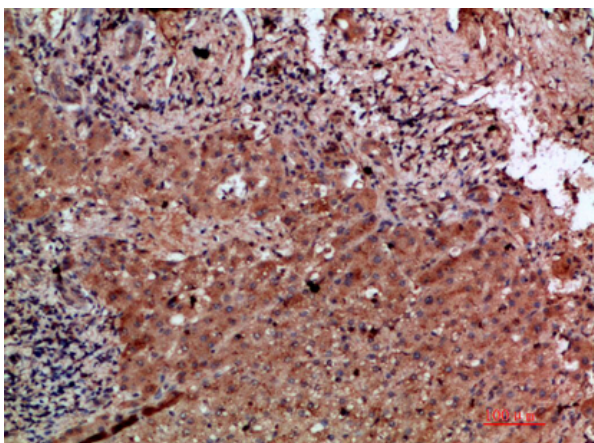
Usage suggestions

This product can be used in immunological reaction related experiments. For more information, please consult technical personnel.

Products Images



Immunohistochemical analysis of paraffin-embedded human-liver-cancer, antibody was diluted at 1:200



Immunohistochemical analysis of paraffin-embedded human-liver-cancer, antibody was diluted at 1:200