



FSH β Polyclonal Antibody

Catalog No	BYab-10658
Isotype	IgG
Reactivity	Human;Mouse;Rat
Applications	IHC;IF;ELISA
Gene Name	FSHB
Protein Name	Follitropin subunit beta (Follicle-stimulating hormone beta subunit) (FSH-B) (FSH-beta) (Follitropin beta chain)
Immunogen	Synthetic peptide from human protein at AA range: 10-50
Specificity	The antibody detects endogenous FSH β
Formulation	Liquid in PBS containing 50% glycerol, 0.5% BSA and 0.02% sodium azide.
Source	Polyclonal, Rabbit,IgG
Purification	The antibody was affinity-purified from rabbit antiserum by affinity-chromatography using epitope-specific immunogen.
Dilution	IHC-p 1:50-200, ELISA 1:10000-20000. IF 1:50-200
Concentration	1 mg/ml
Purity	$\geq 90\%$
Storage Stability	-20°C/1 year
Synonyms	Follitropin subunit beta (Follicle-stimulating hormone beta subunit;FSH-B;FSH-beta;Follitropin beta chain)
Observed Band	
Cell Pathway	Secreted . Efficient secretion requires dimerization with CGA. .
Tissue Specificity	
Function	disease:Defects in FSHB are a cause of isolated follicle-stimulating hormone deficiency (IFSHD) [MIM:229070]. Selective follicle-stimulating hormone deficiency is an uncommon cause of infertility, producing amenorrhea and hypogonadism in women and oligo or azoospermia with normal testosterone levels in normally virilised men.,function:Stimulates development of follicle and spermatogenesis in the reproductive organs.,online information:Follicle-stimulating hormone entry,online information:The Singapore human mutation and polymorphism database,pharmaceutical:Available under the names Gonal-F or Metrodin HP (Serono) and Puregon (Organon). Used in the treatment of infertility in women with proven hypopituitarism or who have not responded to clomifene; or in superovulation treatment for assisted conception

Nanjing BYabscience technology Co.,Ltd



(such as in vitro fertilization). Metrodin HP is also used in the treatment of hypogona

Background

follicle stimulating hormone beta subunit(FSHB) Homo sapiens The pituitary glycoprotein hormone family includes follicle-stimulating hormone, luteinizing hormone, chorionic gonadotropin, and thyroid-stimulating hormone. All of these glycoproteins consist of an identical alpha subunit and a hormone-specific beta subunit. This gene encodes the beta subunit of follicle-stimulating hormone. In conjunction with luteinizing hormone, follicle-stimulating hormone induces egg and sperm production. Alternative splicing results in two transcript variants encoding the same protein. [provided by RefSeq, Jul 2008],

matters needing attention

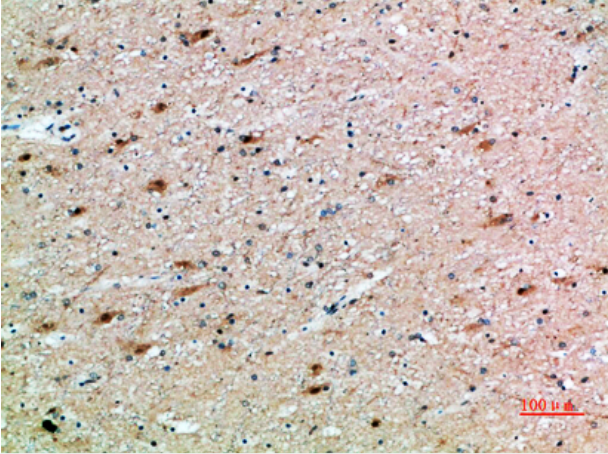
Avoid repeated freezing and thawing!

Usage suggestions

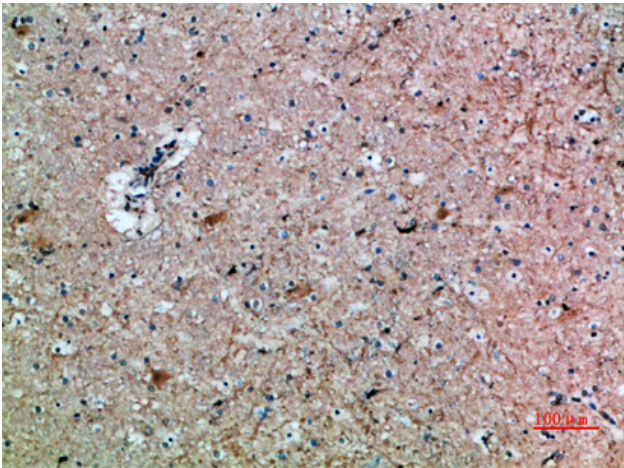
This product can be used in immunological reaction related experiments. For more information, please consult technical personnel.



Products Images



Immunohistochemical analysis of paraffin-embedded human-brain, antibody was diluted at 1:200



Immunohistochemical analysis of paraffin-embedded human-brain, antibody was diluted at 1:200