



DAAM1 Polyclonal Antibody

Catalog No	BYab-10654
Isotype	IgG
Reactivity	Human;Mouse
Applications	WB;ELISA
Gene Name	DAAM1 KIAA0666
Protein Name	Disheveled-associated activator of morphogenesis 1
Immunogen	Synthetic peptide from human protein at AA range: 400-500
Specificity	The antibody detects endogenous DAAM1
Formulation	Liquid in PBS containing 50% glycerol, 0.5% BSA and 0.02% sodium azide.
Source	Polyclonal, Rabbit,IgG
Purification	The antibody was affinity-purified from rabbit antiserum by affinity-chromatography using epitope-specific immunogen.
Dilution	WB 1:500-2000, ELISA 1:10000-20000
Concentration	1 mg/ml
Purity	≥90%
Storage Stability	-20°C/1 year
Synonyms	Disheveled-associated activator of morphogenesis 1
Observed Band	123kD
Cell Pathway	Cytoplasm . Cytoplasm, cytoskeleton, cilium basal body . Perinuclear.
Tissue Specificity	Expressed in all tissues examined.
Function	domain:The C-terminal DAD domain may participate in intramolecular interactions with the N-terminus.,function:Binds to disheveled (Dvl) and Rho, and mediates Wnt-induced Dvl-Rho complex formation. May play a role as a scaffolding protein to recruit Rho-GDP and Rho-GEF, thereby enhancing Rho-GTP formation. Can direct nucleation and elongation of new actin filaments.,similarity:Belongs to the formin homology family.,similarity:Contains 1 DAD (diaphanous autoregulatory) domain.,similarity:Contains 1 FH1 (formin homology 1) domain.,similarity:Contains 1 FH2 (formin homology 2) domain.,similarity:Contains 1 GBD/FH3 (Rho GTPase-binding/formin homology 3) domain.,subcellular location:Perinuclear.,subunit:Homodimer. Interacts with CIP4, FNBP1 and FNBP1L. Interacts with the SH3 domains of Abl, BTK, endophilin, spectrin and SRC. Binds specifically to GTP-bound CDC42 and RHOA.,tissue

Nanjing BYabscience technology Co.,Ltd



specificity:Ex

Background

Cell motility, adhesion, cytokinesis, and other functions of the cell cortex are mediated by reorganization of the actin cytoskeleton and several formin homology (FH) proteins have been associated with these processes. The protein encoded by this gene contains two FH domains and belongs to a novel FH protein subfamily implicated in cell polarity. A key regulator of cytoskeletal architecture, the small GTPase Rho, is activated during development by Wnt/Fz signaling to control cell polarity and movement. The protein encoded by this gene is thought to function as a scaffolding protein for the Wnt-induced assembly of a disheveled (Dvl)-Rho complex. This protein also promotes the nucleation and elongation of new actin filaments and regulates cell growth through the stabilization of microtubules. Alternative splicing results in multiple transcript variants encoding distinct

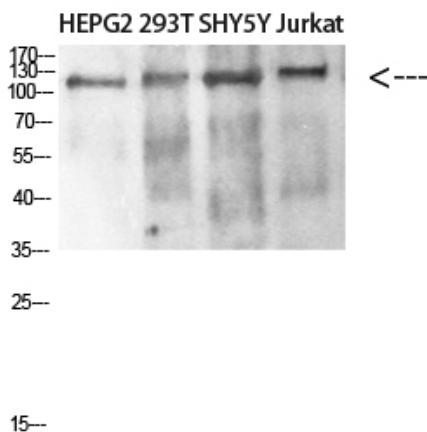
matters needing attention

Avoid repeated freezing and thawing!

Usage suggestions

This product can be used in immunological reaction related experiments. For more information, please consult technical personnel.

Products Images



Western blot analysis of SW480 MCF7 lysate, antibody was diluted at 500. Secondary antibody(catalog#:RS0002) was diluted at 1:20000

Nanjing BYabscience technology Co.,Ltd