



# GADD34 Polyclonal Antibody

<b>Catalog No</b>	BYab-10652
<b>Isotype</b>	IgG
<b>Reactivity</b>	Human;Rat;Mouse;
<b>Applications</b>	WB;ELISA
<b>Gene Name</b>	PPP1R15A GADD34
<b>Protein Name</b>	Protein phosphatase 1 regulatory subunit 15A (Growth arrest and DNA damage-inducible protein GADD34) (Myeloid differentiation primary response protein MyD116 homolog)
<b>Immunogen</b>	Synthetic peptide from human protein at AA range: 430-490
<b>Specificity</b>	The antibody detects endogenous GADD34
<b>Formulation</b>	Liquid in PBS containing 50% glycerol, 0.5% BSA and 0.02% sodium azide.
<b>Source</b>	Polyclonal, Rabbit,IgG
<b>Purification</b>	The antibody was affinity-purified from rabbit antiserum by affinity-chromatography using epitope-specific immunogen.
<b>Dilution</b>	WB 1:500-2000, ELISA 1:10000-20000
<b>Concentration</b>	1 mg/ml
<b>Purity</b>	≥90%
<b>Storage Stability</b>	-20°C/1 year
<b>Synonyms</b>	Protein phosphatase 1 regulatory subunit 15A (Growth arrest and DNA damage-inducible protein GADD34) (Myeloid differentiation primary response protein MyD116 homolog)
<b>Observed Band</b>	73kD
<b>Cell Pathway</b>	Endoplasmic reticulum membrane; Peripheral membrane protein; Cytoplasmic side . Mitochondrion outer membrane; Peripheral membrane protein; Cytoplasmic side . Associates with membranes via an N-terminal amphipathic intramembrane region. .
<b>Tissue Specificity</b>	Brain,
<b>Function</b>	function:Recruits the serine/threonine-protein phosphatase PP1 to dephosphorylate the translation initiation factor eIF-2A/EIF2S1, thereby reversing the shut-off of protein synthesis initiated by stress-inducible kinases and facilitating recovery of cells from stress. Down-regulates the TGF-beta signaling pathway by promoting dephosphorylation of TGFβ1 by PP1. May promote apoptosis by inducing TP53 phosphorylation on 'Ser-15'.,induction:By methyl

Nanjing BYabscience technology Co.,Ltd



methanesulfonate and ionizing irradiation. By IL24 in melanoma cells; which induces apoptosis.,miscellaneous:The phosphatase activity of the PPP1R15A-PP1 complex toward EIF2S1 is specifically inhibited by Salubrinal, a drug that protects cells from endoplasmic reticulum stress.,PTM:Phosphorylated on tyrosine by LYN; which impairs its antiproliferative activity.,similarity:Belongs to the PPP1R15 family.,subunit:Interacts with PCNA (By similarity)

#### Background

This gene is a member of a group of genes whose transcript levels are increased following stressful growth arrest conditions and treatment with DNA-damaging agents. The induction of this gene by ionizing radiation occurs in certain cell lines regardless of p53 status, and its protein response is correlated with apoptosis following ionizing radiation. [provided by RefSeq, Jul 2008],

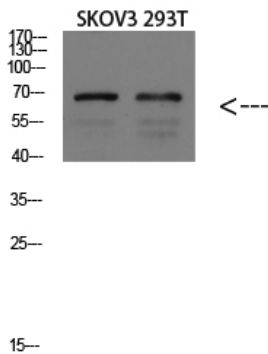
#### matters needing attention

Avoid repeated freezing and thawing!

#### Usage suggestions

This product can be used in immunological reaction related experiments. For more information, please consult technical personnel.

## Products Images



Western blot analysis of MOUSE-BRAIN lysate, antibody was diluted at 1000. Secondary antibody(catalog#:RS0002) was diluted at 1:20000