



IL-19 Polyclonal Antibody

Catalog No	BYab-10649
Isotype	IgG
Reactivity	Human;Rat
Applications	WB;IHC;IF;ELISA
Gene Name	IL19 ZMDA1
Protein Name	Interleukin-19 (IL-19) (Melanoma differentiation-associated protein-like protein) (NG.1)
Immunogen	Synthetic peptide from human protein at AA range: 51-100
Specificity	The antibody detects endogenous IL-19
Formulation	Liquid in PBS containing 50% glycerol, 0.5% BSA and 0.02% sodium azide.
Source	Polyclonal, Rabbit,IgG
Purification	The antibody was affinity-purified from rabbit antiserum by affinity-chromatography using epitope-specific immunogen.
Dilution	WB 1:500-2000,IHC-p 1:500-200, ELISA 1:10000-20000. IF 1:50-200
Concentration	1 mg/ml
Purity	≥90%
Storage Stability	-20°C/1 year
Synonyms	Interleukin-19 (IL-19;Melanoma differentiation-associated protein-like protein;NG.1)
Observed Band	20kD
Cell Pathway	Secreted.
Tissue Specificity	
Function	function:May play some important roles in inflammatory responses. Up-regulates IL-6 and TNF-alpha and induces apoptosis.,similarity:Belongs to the IL-10 family.,
Background	The protein encoded by this gene is a cytokine that belongs to the IL10 cytokine subfamily. This cytokine is found to be preferentially expressed in monocytes. It can bind the IL20 receptor complex and lead to the activation of the signal transducer and activator of transcription 3 (STAT3). A similar cytokine in mouse is reported to up-regulate the expression of IL6 and TNF-alpha and induce apoptosis, which suggests a role of this cytokine in inflammatory responses. Alternatively spliced transcript variants encoding the distinct isoforms have been described. [provided by RefSeq, Jul 2008],

Nanjing BYabscience technology Co.,Ltd



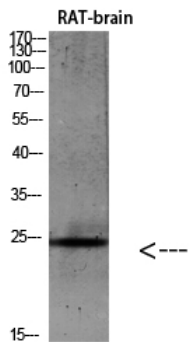
matters needing attention

Avoid repeated freezing and thawing!

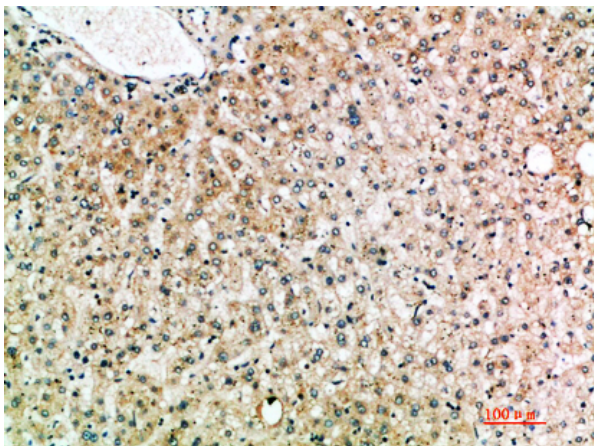
Usage suggestions

This product can be used in immunological reaction related experiments. For more information, please consult technical personnel.

Products Images



Western blot analysis of 293T Hela VEC KB mouse-kidney lysate, antibody was diluted at 500. Secondary antibody(catalog#:RS0002) was diluted at 1:20000



Immunohistochemical analysis of paraffin-embedded human-liver, antibody was diluted at 1:200