



PD-L2 Polyclonal Antibody

Catalog No	BYab-10646
Isotype	IgG
Reactivity	Human;Rat;Mouse;
Applications	WB;IHC;IF;ELISA
Gene Name	PDCD1LG2 B7DC CD273 PDCD1L2 PDL2
Protein Name	Programmed cell death 1 ligand 2 (PD-1 ligand 2) (PD-L2) (PDCD1 ligand 2) (Programmed death ligand 2) (Butyrophilin B7-DC) (B7-DC) (CD antigen CD273)
Immunogen	Synthetic peptide from human protein at AA range: 31-80
Specificity	The antibody detects endogenous PD-L2
Formulation	Liquid in PBS containing 50% glycerol, 0.5% BSA and 0.02% sodium azide.
Source	Polyclonal, Rabbit,IgG
Purification	The antibody was affinity-purified from rabbit antiserum by affinity-chromatography using epitope-specific immunogen.
Dilution	WB 1:500-2000,IHC-p 1:50-200, ELISA 1:10000-20000. IF 1:50-200
Concentration	1 mg/ml
Purity	≥90%
Storage Stability	-20°C/1 year
Synonyms	Programmed cell death 1 ligand 2 (PD-1 ligand 2;PD-L2;PDCD1 ligand 2;Programmed death ligand 2;Butyrophilin B7-DC;B7-DC;CD antigen CD273)
Observed Band	30kD
Cell Pathway	[Isoform 3]: Secreted .; [Isoform 2]: Endomembrane system ; Single-pass type I membrane protein .; [Isoform 1]: Cell membrane ; Single-pass type I membrane protein .
Tissue Specificity	Highly expressed in heart, placenta, pancreas, lung and liver and weakly expressed in spleen, lymph nodes and thymus.
Function	function:Involved in the costimulatory signal, essential for T-cell proliferation and IFNG production in a PDCD1-independent manner. Interaction with PDCD1 inhibits T-cell proliferation by blocking cell cycle progression and cytokine production.,induction:Up-regulated by IFNG stimulation in monocytes and induced on dendritic cells grown from peripheral blood mononuclear cells with CSF2 and IL4.,similarity:Belongs to the immunoglobulin superfamily. BTN/MOG family.,similarity:Contains 1 Ig-like C2-type (immunoglobulin-like) domain.,similarity:Contains 1 Ig-like V-type (immunoglobulin-like) domain.,subunit:Interacts with PDCD1.,tissue specificity:Highly expressed in

Nanjing BYabscience technology Co.,Ltd



heart, placenta, pancreas, lung and liver and weakly expressed in spleen, lymph nodes and thymus.,

Background

function:Involved in the costimulatory signal, essential for T-cell proliferation and IFNG production in a PDCD1-independent manner. Interaction with PDCD1 inhibits T-cell proliferation by blocking cell cycle progression and cytokine production.,induction:Up-regulated by IFNG stimulation in monocytes and induced on dendritic cells grown from peripheral blood mononuclear cells with CSF2 and IL4.,similarity:Belongs to the immunoglobulin superfamily. BTN/MOG family.,similarity:Contains 1 Ig-like C2-type (immunoglobulin-like) domain.,similarity:Contains 1 Ig-like V-type (immunoglobulin-like) domain.,subunit:Interacts with PDCD1.,tissue specificity:Highly expressed in heart, placenta, pancreas, lung and liver and weakly expressed in spleen, lymph nodes and thymus.,

matters needing attention

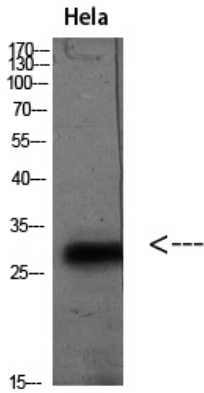
Avoid repeated freezing and thawing!

Usage suggestions

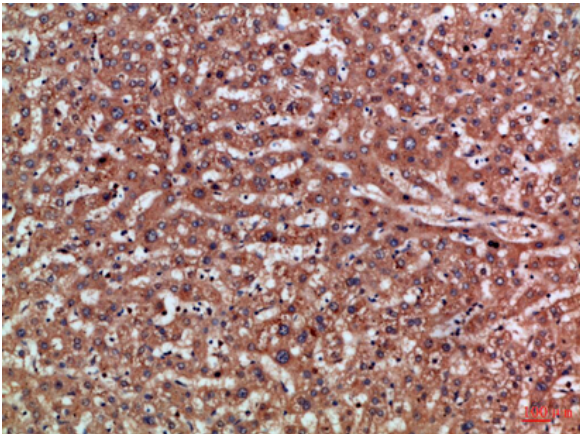
This product can be used in immunological reaction related experiments. For more information, please consult technical personnel.



Products Images



Western blot analysis of HeLa(TSA 400nM 24h) lysate, antibody was diluted at 2000. Secondary antibody(catalog#:RS0002) was diluted at 1:20000



Immunohistochemical analysis of paraffin-embedded Human-liver, antibody was diluted at 1:100