



# CD64 Polyclonal Antibody

<b>Catalog No</b>	BYab-10645
<b>Isotype</b>	IgG
<b>Reactivity</b>	Human;Rat;Mouse;
<b>Applications</b>	WB;IHC;IF;ELISA
<b>Gene Name</b>	FCGR1A FCG1 FCGR1 IGFR1
<b>Protein Name</b>	High affinity immunoglobulin gamma Fc receptor I (IgG Fc receptor I) (Fc-gamma RI) (FcRI) (Fc-gamma RIA) (FcgammaRIa) (CD antigen CD64)
<b>Immunogen</b>	Synthetic peptide from human protein at AA range: 230-280
<b>Specificity</b>	The antibody detects endogenous CD64
<b>Formulation</b>	Liquid in PBS containing 50% glycerol, 0.5% BSA and 0.02% sodium azide.
<b>Source</b>	Polyclonal, Rabbit,IgG
<b>Purification</b>	The antibody was affinity-purified from rabbit antiserum by affinity-chromatography using epitope-specific immunogen.
<b>Dilution</b>	WB 1:500-2000,IHC-p 1:500-200, ELISA 1:10000-20000. IF 1:50-200
<b>Concentration</b>	1 mg/ml
<b>Purity</b>	≥90%
<b>Storage Stability</b>	-20°C/1 year
<b>Synonyms</b>	High affinity immunoglobulin gamma Fc receptor I (IgG Fc receptor I;Fc-gamma RI;FcRI;Fc-gamma RIA;FcgammaRIa;CD antigen CD64)
<b>Observed Band</b>	45kD
<b>Cell Pathway</b>	Cell membrane ; Single-pass type I membrane protein . Stabilized at the cell membrane through interaction with FCER1G.
<b>Tissue Specificity</b>	Monocyte/macrophage specific.
<b>Function</b>	function:High affinity receptor for the Fc region of immunoglobulins gamma. Functions in both innate and adaptive immune responses.,online information:FCGR1A mutation db,PTM:N-glycosylated.,PTM:Phosphorylated on serine residues.,similarity:Belongs to the immunoglobulin superfamily. FCGR1 family.,similarity:Contains 3 Ig-like C2-type (immunoglobulin-like) domains.,subcellular location:Stabilized at the cell membrane through interaction with FCER1G.,subunit:Interacts with FCERG1; forms a functional signaling complex. Interacts with FLNA; prevents FCGR1A degradation. Interacts with EPB41L2, LAT and PPL.,tissue specificity:Monocyte/macrophage specific.,

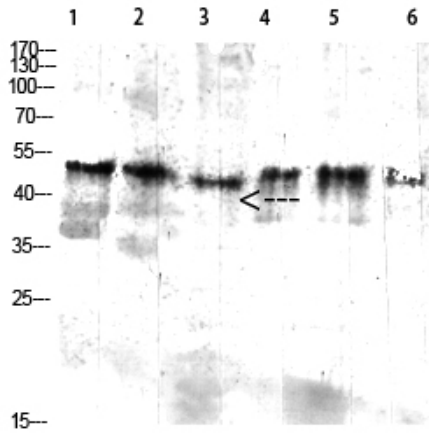
Nanjing BYabscience technology Co.,Ltd



<b>Background</b>	This gene encodes a protein that plays an important role in the immune response. This protein is a high-affinity Fc-gamma receptor. The gene is one of three related gene family members located on chromosome 1. [provided by RefSeq, Jul 2008],
<b>matters needing attention</b>	Avoid repeated freezing and thawing!
<b>Usage suggestions</b>	This product can be used in immunological reaction related experiments. For more information, please consult technical personnel.

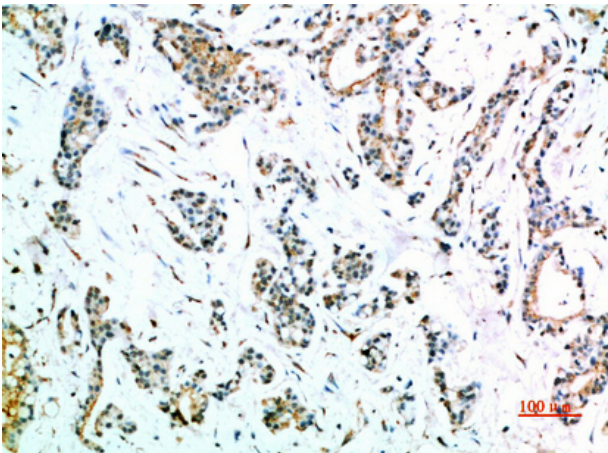


## Products Images

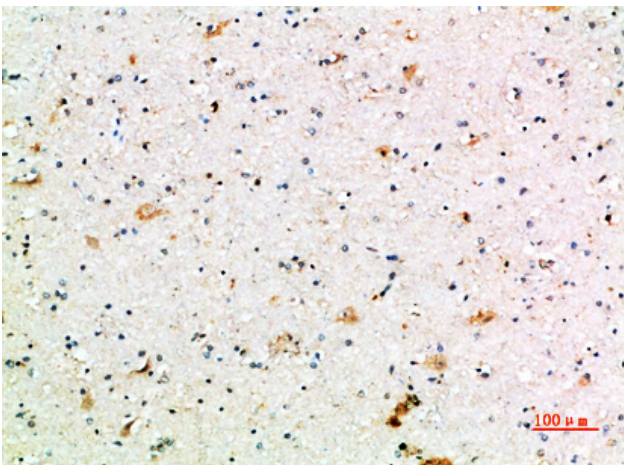


1 mouse-kidney 2 mouse-kidney 3 mouse-lung  
4 mouse-heart 5 293T 6 293T

Western blot analysis of mouse-kidney lysate, antibody was diluted at 2000. Secondary antibody(catalog#:RS0002) was diluted at 1:20000



Immunohistochemical analysis of paraffin-embedded human-stomach-cancer, antibody was diluted at 1:200



Immunohistochemical analysis of paraffin-embedded human-brain, antibody was diluted at 1:200