



WISP-3 Polyclonal Antibody

Catalog No	BYab-10636
Isotype	IgG
Reactivity	Human;Rat;Mouse;
Applications	WB;ELISA
Gene Name	WISP3 CCN6 UNQ462/PRO790/PRO956
Protein Name	WNT1-inducible-signaling pathway protein 3 (WISP-3) (CCN family member 6)
Immunogen	The antiserum was produced against synthesized peptide derived from the N-terminal region of human WISP3. AA range:1-50
Specificity	The antibody detects endogenous WISP-3
Formulation	Liquid in PBS containing 50% glycerol, 0.5% BSA and 0.02% sodium azide.
Source	Polyclonal, Rabbit,IgG
Purification	The antibody was affinity-purified from rabbit antiserum by affinity-chromatography using epitope-specific immunogen.
Dilution	WB 1:500-2000, ELISA 1:10000-20000
Concentration	1 mg/ml
Purity	≥90%
Storage Stability	-20°C/1 year
Synonyms	WNT1-inducible-signaling pathway protein 3 (WISP-3) (CCN family member 6)
Observed Band	55kD
Cell Pathway	Secreted . Mitochondrion . Associated with membranes. .
Tissue Specificity	Predominant expression in adult kidney and testis and fetal kidney. Weaker expression found in placenta, ovary, prostate and small intestine (PubMed:9843955, PubMed:10471507). Also expressed in skeletally-derived cells such as synoviocytes and articular cartilage chondrocytes (PubMed:10471507).
Function	disease:Defects in WISP3 are the cause of progressive pseudorheumatoid arthropathy of childhood (PPAC) [MIM:208230]. PPAC is an autosomal recessive disorder characterized by stiffness and swelling of joints, motor weakness and joint contractures. Signs and symptoms of the disease develop typically between three and eight years of age. This progressive disease is a primary disorder of articular cartilage with continued cartilage loss and destructive bone changes with aging.,function:Appears to be required for normal postnatal skeletal growth and cartilage homeostasis.,similarity:Belongs to the CCN family.,similarity:Contains 1

Nanjing BYabscience technology Co.,Ltd



CTCK (C-terminal cystine knot-like) domain.,similarity:Contains 1 IGFBP
N-terminal domain.,similarity:Contains 1 TSP type-1 domain.,tissue
specificity:Predominant expression in adult kidney and testis and fetal kidney.
Weaker expression found in placenta, ovary, pro

Background

This gene encodes a member of the WNT1 inducible signaling pathway (WISP) protein subfamily, which belongs to the connective tissue growth factor (CTGF) family. WNT1 is a member of a family of cysteine-rich, glycosylated signaling proteins that mediate diverse developmental processes. The CTGF family members are characterized by four conserved cysteine-rich domains: insulin-like growth factor-binding domain, von Willebrand factor type C module, thrombospondin domain and C-terminal cystine knot-like domain. This gene is overexpressed in colon tumors. It may be downstream in the WNT1 signaling pathway that is relevant to malignant transformation. Mutations of this gene are associated with progressive pseudorheumatoid dysplasia, an autosomal recessive skeletal disorder, indicating that the gene is essential for normal postnatal skeletal growth and cartilage homeostasis. Multiple

matters needing attention

Avoid repeated freezing and thawing!

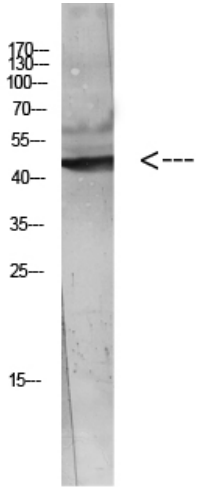
Usage suggestions

This product can be used in immunological reaction related experiments. For more information, please consult technical personnel.

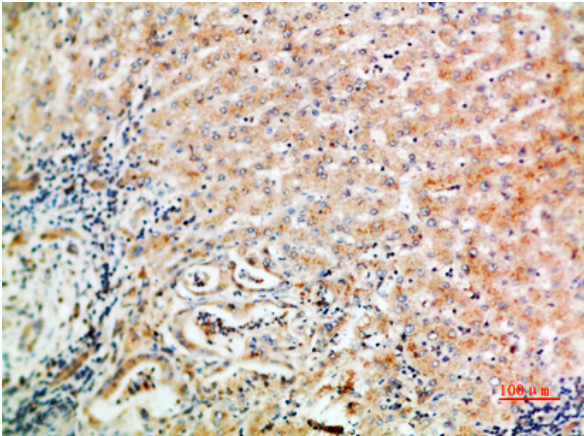
Nanjing BYabscience technology Co.,Ltd



Products Images



Western blot analysis of Hela Cell Lysate using antibody. Secondary antibody(catalog#:RS0002) was diluted at 1:20000



Immunohistochemical analysis of paraffin-embedded human-liver-cancer, antibody was diluted at 1:200