



# IRS2 Polyclonal Antibody

<b>Catalog No</b>	BYab-10634
<b>Isotype</b>	IgG
<b>Reactivity</b>	Human;Rat;Mouse;
<b>Applications</b>	WB;ELISA
<b>Gene Name</b>	IRS2
<b>Protein Name</b>	insulin receptor substrate 2
<b>Immunogen</b>	Synthetic peptide from human protein at AA range: 660-700
<b>Specificity</b>	The antibody detects endogenous IRS2 protein
<b>Formulation</b>	Liquid in PBS containing 50% glycerol, 0.5% BSA and 0.02% sodium azide.
<b>Source</b>	Polyclonal, Rabbit,IgG
<b>Purification</b>	The antibody was affinity-purified from rabbit antiserum by affinity-chromatography using epitope-specific immunogen.
<b>Dilution</b>	WB 1:500-2000, ELISA 1:10000-20000
<b>Concentration</b>	1 mg/ml
<b>Purity</b>	≥90%
<b>Storage Stability</b>	-20°C/1 year
<b>Synonyms</b>	IRS2
<b>Observed Band</b>	170kD
<b>Cell Pathway</b>	Cytoplasm, cytosol .
<b>Tissue Specificity</b>	Blood,Epithelium,Platelet,
<b>Function</b>	function:May mediate the control of various cellular processes by insulin.,PTM:Phosphorylated upon DNA damage, probably by ATM or ATR.,similarity:Contains 1 IRS-type PTB domain.,similarity:Contains 1 PH domain.,
<b>Background</b>	This gene encodes the insulin receptor substrate 2, a cytoplasmic signaling molecule that mediates effects of insulin, insulin-like growth factor 1, and other cytokines by acting as a molecular adaptor between diverse receptor tyrosine kinases and downstream effectors. The product of this gene is phosphorylated by the insulin receptor tyrosine kinase upon receptor stimulation, as well as by an interleukin 4 receptor-associated kinase in response to IL4 treatment. [provided by RefSeq, Jul 2008],

Nanjing BYabscience technology Co.,Ltd



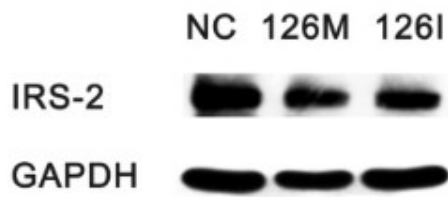
**matters needing attention**

Avoid repeated freezing and thawing!

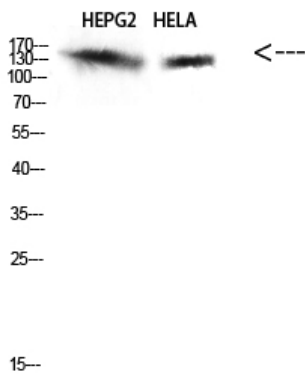
**Usage suggestions**

This product can be used in immunological reaction related experiments. For more information, please consult technical personnel.

**Products Images**



Tao, Hong, et al. "MiR-126 suppresses the glucose-stimulated proliferation via IRS-2 in INS-1  $\beta$  cells." PloS one 11.2 (2016): e0149954.



Western Blot analysis of HEPG2, HELA cells using Antibody diluted at 500. Secondary antibody(catalog#:RS0002) was diluted at 1:20000