



FAM48A Polyclonal Antibody

Catalog No	BYab-10628
Isotype	IgG
Reactivity	Human;Mouse;Rat
Applications	WB;ELISA
Gene Name	FAM48A C13orf19 FP757
Protein Name	family with sequence similarity 48, member A
Immunogen	The antiserum was produced against synthesized peptide derived from the Internal region of human FAM48A. AA range:231-280
Specificity	The antibody detects endogenous FAM48A protein
Formulation	Liquid in PBS containing 50% glycerol, 0.5% BSA and 0.02% sodium azide.
Source	Polyclonal, Rabbit,IgG
Purification	The antibody was affinity-purified from rabbit antiserum by affinity-chromatography using epitope-specific immunogen.
Dilution	WB 1:500-2000, ELISA 1:10000-20000
Concentration	1 mg/ml
Purity	≥90%
Storage Stability	-20°C/1 year
Synonyms	FAM48A C13orf19 FP757
Observed Band	85kD
Cell Pathway	Nucleus .
Tissue Specificity	Highly expressed in testis, moderately in brain and pituitary gland. Expressed in several fetal tissues, including lung, brain, thymus and kidney. Expression is down-regulated in malignant prostate tissues.
Function	function:Required for MAP kinase p38 (MAPK11, MAPK12, MAPK13 and/or MAPK14) activation during gastrulation. Required for down-regulation of E-cadherin during gastrulation by regulating E-cadherin protein level downstream from NCK-interacting kinase (NIK) and independently of the regulation of transcription by Fgf signaling and Snail.,similarity:Belongs to the FAM48 family.,subunit:Interacts with MAPK14.,tissue specificity:Highly expressed in testis, moderately in brain and pituitary gland. Expressed in several fetal tissues, including lung, brain, thymus and kidney. Expression is down-regulated in malignant prostate tissues.,

Nanjing BYabscience technology Co.,Ltd



Background

function:Required for MAP kinase p38 (MAPK11, MAPK12, MAPK13 and/or MAPK14) activation during gastrulation. Required for down-regulation of E-cadherin during gastrulation by regulating E-cadherin protein level downstream from NCK-interacting kinase (NIK) and independently of the regulation of transcription by Fgf signaling and Snail.,similarity:Belongs to the FAM48 family.,subunit:Interacts with MAPK14.,tissue specificity:Highly expressed in testis, moderately in brain and pituitary gland. Expressed in several fetal tissues, including lung, brain, thymus and kidney. Expression is down-regulated in malignant prostate tissues.,

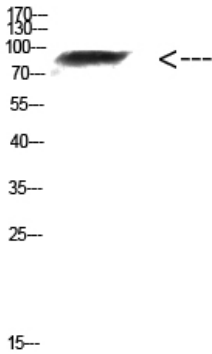
matters needing attention

Avoid repeated freezing and thawing!

Usage suggestions

This product can be used in immunological reaction related experiments. For more information, please consult technical personnel.

Products Images



Western Blot analysis of mouse-kidney cells using Antibody diluted at 1000. Secondary antibody(catalog#:RS0002) was diluted at 1:20000

Nanjing BYabscience technology Co.,Ltd