



MYOZ2 Polyclonal Antibody

Catalog No	BYab-10627
Isotype	IgG
Reactivity	Human;Mouse;Rat
Applications	WB;ELISA;IHC
Gene Name	MYOZ2 C4orf5
Protein Name	myozenin 2
Immunogen	The antiserum was produced against synthesized peptide derived from the Internal region of human MYOZ2. AA range:21-70
Specificity	The antibody detects endogenous MYOZ2 protein
Formulation	Liquid in PBS containing 50% glycerol, 0.5% BSA and 0.02% sodium azide.
Source	Polyclonal, Rabbit,IgG
Purification	The antibody was affinity-purified from rabbit antiserum by affinity-chromatography using epitope-specific immunogen.
Dilution	WB 1:500-2000;IHC-p 1:50-300; ELISA 2000-20000
Concentration	1 mg/ml
Purity	≥90%
Storage Stability	-20°C/1 year
Synonyms	MYOZ2 C4orf5
Observed Band	30kD
Cell Pathway	Cytoplasm, myofibril, sarcomere, Z line . Colocalizes with ACTN1 and PPP3CA at the Z-line of heart and skeletal muscle. .
Tissue Specificity	Expressed specifically in heart and skeletal muscle.
Function	function:Myozenins may serve as intracellular binding proteins involved in linking Z-disk proteins such as alpha-actinin, gamma-filamin, TCAP/telethonin, LDB3/ZASP and localizing calcineurin signaling to the sarcomere. Plays an important role in the modulation of calcineurin signaling. May play a role in myofibrillogenesis.,similarity:Belongs to the myozenin family.,subcellular location:Colocalizes with ACTN1 and PPP3CA at the Z-line of heart and skeletal muscle.,subunit:Interacts via its C-terminus with spectrin repeats 3 and 4 of ACTN2. Interacts with ATCN1, LDB3, MYOT and PPP3CA.,tissue specificity:Expressed specifically in heart and skeletal muscle.,

Nanjing BYabscience technology Co.,Ltd



Background

The protein encoded by this gene belongs to a family of sarcomeric proteins that bind to calcineurin, a phosphatase involved in calcium-dependent signal transduction in diverse cell types. These family members tether calcineurin to alpha-actinin at the z-line of the sarcomere of cardiac and skeletal muscle cells, and thus they are important for calcineurin signaling. Mutations in this gene cause cardiomyopathy familial hypertrophic type 16, a hereditary heart disorder. [provided by RefSeq, Aug 2011],

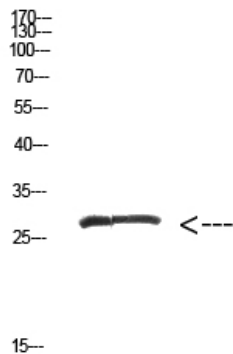
matters needing attention

Avoid repeated freezing and thawing!

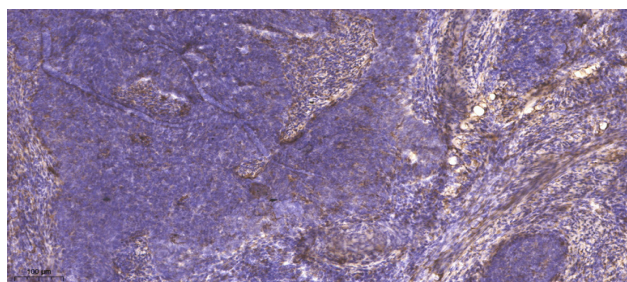
Usage suggestions

This product can be used in immunological reaction related experiments. For more information, please consult technical personnel.

Products Images



Western Blot analysis of hepg2 cells using Antibody diluted at 500. Secondary antibody(catalog#:RS0002) was diluted at 1:20000



Immunohistochemical analysis of paraffin-embedded human cervical carcinoma. 1, Antibody was diluted at 1:200(4° overnight). 2, Tris-EDTA,pH9.0 was used for antigen retrieval. 3,Secondary antibody was diluted at 1:200(room temperature, 45min).

Nanjing BYabscience technology Co.,Ltd