



Imp3 Polyclonal Antibody

Catalog No	BYab-10618
Isotype	IgG
Reactivity	Human;Mouse;Rat
Applications	WB;ELISA
Gene Name	IMP3 C15orf12 MRPS4
Protein Name	IMP3, U3 small nucleolar ribonucleoprotein, homolog (yeast)
Immunogen	Synthetic peptide from human protein at AA range: 135-184
Specificity	The antibody detects endogenous Imp3 protein
Formulation	Liquid in PBS containing 50% glycerol, 0.5% BSA and 0.02% sodium azide.
Source	Polyclonal, Rabbit,IgG
Purification	The antibody was affinity-purified from rabbit antiserum by affinity-chromatography using epitope-specific immunogen.
Dilution	WB 1:500-2000, ELISA 1:10000-20000
Concentration	1 mg/ml
Purity	≥90%
Storage Stability	-20°C/1 year
Synonyms	IMP3 C15orf12 MRPS4
Observed Band	25kD
Cell Pathway	Nucleus, nucleolus .
Tissue Specificity	Eye,Placenta,Uterus,
Function	function:Component of the 60-80S U3 small nucleolar ribonucleoprotein (U3 snoRNP). Required for the early cleavages during pre-18S ribosomal RNA processing.,similarity:Belongs to the ribosomal protein S4P family.,similarity:Contains 1 S4 RNA-binding domain.,subunit:Component of a heterotrimeric complex containing IMP3, IMP4 and MPHOSPH10. Interacts with MPHOSPH10.,
Background	This gene encodes the human homolog of the yeast Imp3 protein. The protein localizes to the nucleoli and interacts with the U3 snoRNP complex. The protein contains an S4 domain. [provided by RefSeq, Jul 2008],

Nanjing BYabscience technology Co.,Ltd



matters needing attention

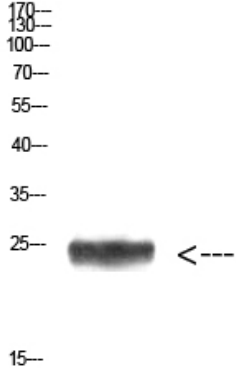
Avoid repeated freezing and thawing!

Usage suggestions

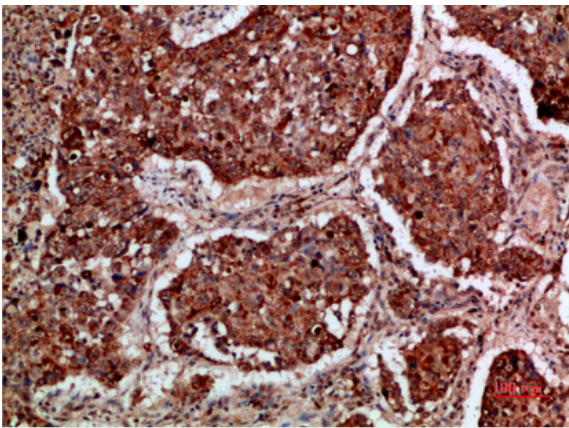
This product can be used in immunological reaction related experiments. For more information, please consult technical personnel.



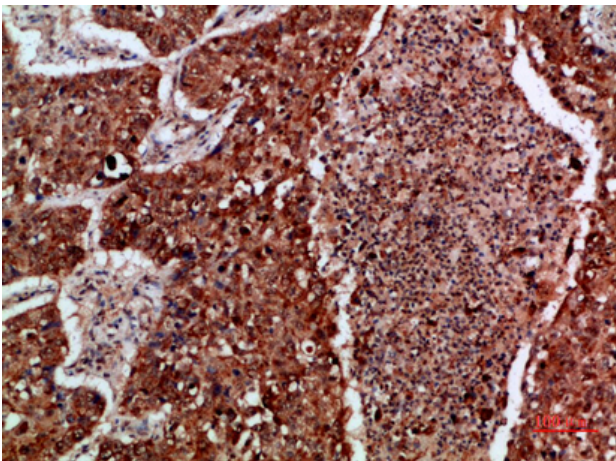
Products Images



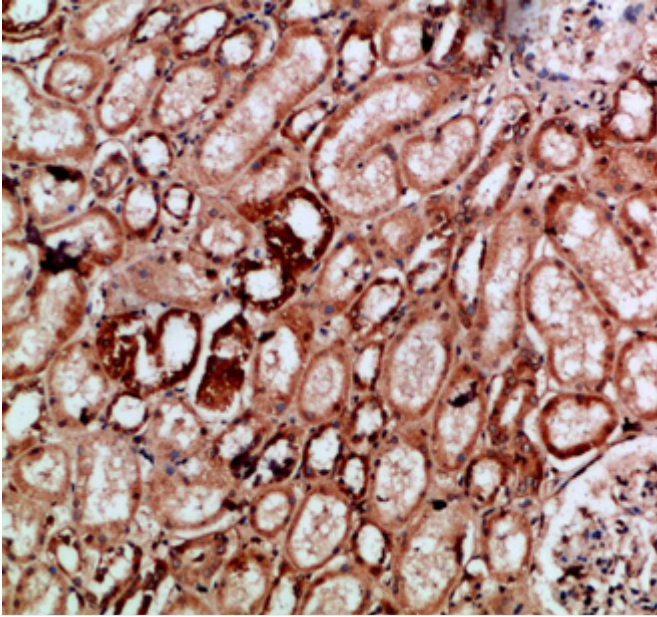
Western Blot analysis of HEPG2 cells using Antibody diluted at 1000. Secondary antibody(catalog#:RS0002) was diluted at 1:20000



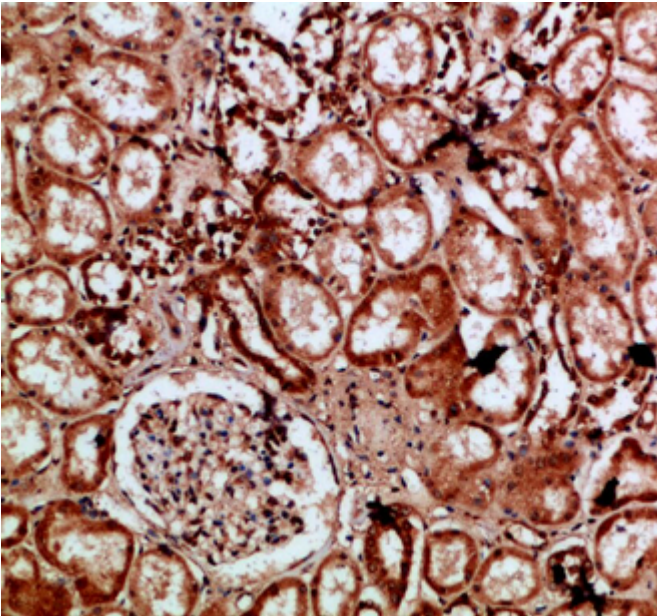
Immunohistochemical analysis of paraffin-embedded human-lung-cancer, antibody was diluted at 1:200



Immunohistochemical analysis of paraffin-embedded human-lung-cancer, antibody was diluted at 1:200



Immunohistochemical analysis of paraffin-embedded human-kidney, antibody was diluted at 1:200



Immunohistochemical analysis of paraffin-embedded human-kidney, antibody was diluted at 1:200