



Ini1 Polyclonal Antibody

Catalog No	BYab-10617
Isotype	IgG
Reactivity	Human;Mouse;Rat
Applications	WB;ELISA
Gene Name	SMARCB1 BAF47 INI1 SNF5L1
Protein Name	SWI/SNF related, matrix associated, actin dependent regulator of chromatin, subfamily b, member 1
Immunogen	Synthetic peptide from human protein at AA range: 331-380
Specificity	The antibody detects endogenous Ini1 protein
Formulation	Liquid in PBS containing 50% glycerol, 0.5% BSA and 0.02% sodium azide.
Source	Polyclonal, Rabbit,IgG
Purification	The antibody was affinity-purified from rabbit antiserum by affinity-chromatography using epitope-specific immunogen.
Dilution	WB 1:500-2000, ELISA 1:10000-20000
Concentration	1 mg/ml
Purity	≥90%
Storage Stability	-20°C/1 year
Synonyms	SMARCB1 BAF47 INI1 SNF5L1
Observed Band	45kD
Cell Pathway	Nucleus.
Tissue Specificity	Bra
Function	disease:Defects in SMARCB1 are a cause of rhabdoid tumor (RDT) [MIM:609322]; also called malignant rhabdoid tumor (MRT). Tumor suppressor. Inactivated in rhabdoid tumors. Rhabdoid tumors are a highly malignant group of neoplasms that usually occur in early childhood. SMARCB1/INI1 is also frequently inactivated in epithelioid sarcomas.,disease:Defects in SMARCB1 are a cause of schwannomatosis [MIM:162091]; also called congenital cutaneous neurilemmomatosis. Schwannomas are benign tumors of the peripheral nerve sheath that usually occur singly in otherwise normal individuals. Multiple schwannomas in the same individual suggest an underlying tumor-predisposition syndrome. The most common such syndrome is NF2. The hallmark of NF2 is the development of bilateral vestibular-nerve schwannomas; but two-thirds or more of all NF2-affected individuals develop schwannomas in other locations, and der

Nanjing BYabscience technology Co.,Ltd



Background

The protein encoded by this gene is part of a complex that relieves repressive chromatin structures, allowing the transcriptional machinery to access its targets more effectively. The encoded nuclear protein may also bind to and enhance the DNA joining activity of HIV-1 integrase. This gene has been found to be a tumor suppressor, and mutations in it have been associated with malignant rhabdoid tumors. Alternatively spliced transcript variants have been found for this gene. [provided by RefSeq, Dec 2015],

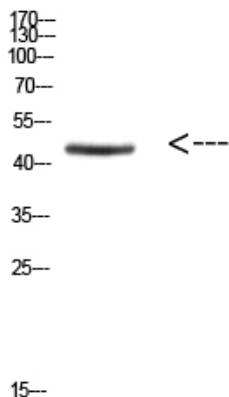
matters needing attention

Avoid repeated freezing and thawing!

Usage suggestions

This product can be used in immunological reaction related experiments. For more information, please consult technical personnel.

Products Images



Western Blot analysis of HEPG2 cells using Antibody diluted at 800. Secondary antibody(catalog#:RS0002) was diluted at 1:20000