



ULK2 Polyclonal Antibody

Catalog No	BYab-10616
Isotype	IgG
Reactivity	Human;Mouse;Rat
Applications	WB;ELISA
Gene Name	ULK2 KIAA0623
Protein Name	unc-51-like kinase 2 (C. elegans)
Immunogen	Synthetic peptide from human protein at AA range: 930-1000
Specificity	The antibody detects endogenous ULK2 protein
Formulation	Liquid in PBS containing 50% glycerol, 0.5% BSA and 0.02% sodium azide.
Source	Polyclonal, Rabbit,IgG
Purification	The antibody was affinity-purified from rabbit antiserum by affinity-chromatography using epitope-specific immunogen.
Dilution	WB 1:500-2000, ELISA 1:10000-20000
Concentration	1 mg/ml
Purity	≥90%
Storage Stability	-20°C/1 year
Synonyms	ULK2 KIAA0623
Observed Band	140kD
Cell Pathway	Cytoplasmic vesicle membrane ; Peripheral membrane protein . Localizes to pre-autophagosomal membrane.
Tissue Specificity	Brain,Testis,
Function	catalytic activity:ATP + a protein = ADP + a phosphoprotein.,PTM:Autophosphorylated.,similarity:Belongs to the protein kinase superfamily. Ser/Thr protein kinase family. APG1/unc-51/ULK1 subfamily.,similarity:Contains 1 protein kinase domain.,
Background	unc-51 like autophagy activating kinase 2(ULK2) Homo sapiens This gene encodes a protein that is similar to a serine/threonine kinase in C. elegans which is involved in axonal elongation. The structure of this protein is similar to the C. elegans protein in that both proteins have an N-terminal kinase domain, a central proline/serine rich (PS) domain, and a C-terminal (C) domain. The gene is located within the Smith-Magenis syndrome region on chromosome 17. Alternatively spliced transcript variants encoding the same protein have been identified.

Nanjing BYabscience technology Co.,Ltd



[provided by RefSeq, Dec 2008],

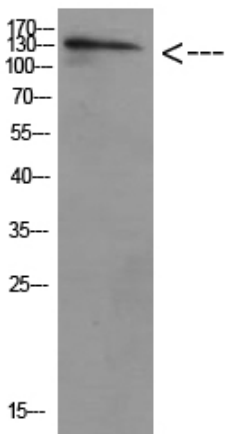
matters needing attention

Avoid repeated freezing and thawing!

Usage suggestions

This product can be used in immunological reaction related experiments. For more information, please consult technical personnel.

Products Images



Western Blot analysis of HELA cells using Antibody diluted at 500. Secondary antibody(catalog#:RS0002) was diluted at 1:20000

Nanjing BYabscience technology Co.,Ltd