



# CLECSF6 Polyclonal Antibody

<b>Catalog No</b>	BYab-10615
<b>Isotype</b>	IgG
<b>Reactivity</b>	Human;Rat;Mouse;
<b>Applications</b>	WB;ELISA
<b>Gene Name</b>	CLEC4A
<b>Protein Name</b>	CLECSF6
<b>Immunogen</b>	The antiserum was produced against synthesized peptide derived from the C-terminal region of human CLEC4A. AA range:161-210
<b>Specificity</b>	CLECSF6 Polyclonal Antibody detects endogenous levels of CLECSF6
<b>Formulation</b>	Liquid in PBS containing 50% glycerol, 0.5% BSA and 0.02% sodium azide.
<b>Source</b>	Polyclonal, Rabbit,IgG
<b>Purification</b>	The antibody was affinity-purified from rabbit antiserum by affinity-chromatography using epitope-specific immunogen.
<b>Dilution</b>	WB 1:500-2000, ELISA 1:10000-20000
<b>Concentration</b>	1 mg/ml
<b>Purity</b>	≥90%
<b>Storage Stability</b>	-20°C/1 year
<b>Synonyms</b>	C-type lectin domain family 4 member A (C-type lectin DDB27) (C-type lectin superfamily member 6) (Dendritic cell immunoreceptor) (Lectin-like immunoreceptor)
<b>Observed Band</b>	28kD
<b>Cell Pathway</b>	Cell membrane ; Single-pass type II membrane protein ; Extracellular side .
<b>Tissue Specificity</b>	Expressed preferentially in hematopoietic tissues. Expressed in all circulating Ag-presenting cells such as dendritic cells, myeloid cells, monocytes, macrophages, B-cells and epidermal Langerhans cells (at protein level). Expressed in peripheral blood leukocytes, neutrophils, moderate quantities in spleen, lymph node, and bone marrow, and at very low levels in thymus.
<b>Function</b>	domain:Contains 1 copy of a cytoplasmic motif that is referred to as the immunoreceptor tyrosine-based inhibitor motif (ITIM). This motif is involved in modulation of cellular responses. The phosphorylated ITIM motif can bind the SH2 domain of several SH2-containing phosphatases.,function:May be involved in regulating immune reactivity. May play a role in modulating dendritic cells (DC) differentiation and/or maturation. May be involved via its ITIM motif

**Nanjing BYabscience technology Co.,Ltd**



(immunoreceptor tyrosine-based inhibitory motifs) in the inhibition of B-cell-receptor-mediated calcium mobilization and protein tyrosine phosphorylation.,induction:Agonists of neutrophils GM-CSF, IL-3, IL-4 and IL-13 up-regulated mRNA expression of isoform 2.,online information:DCIR,similarity:Contains 1 C-type lectin domain.,subunit:May interact with PTPN6 via its ITIM motif.,tissue specificity:Expressed in dendritic cells, myeloid ce

**Background**

This gene encodes a member of the C-type lectin/C-type lectin-like domain (CTL/CTLD) superfamily. Members of this family share a common protein fold and have diverse functions, such as cell adhesion, cell-cell signalling, glycoprotein turnover, and roles in inflammation and immune response. The encoded type 2 transmembrane protein may play a role in inflammatory and immune response. Multiple transcript variants encoding distinct isoforms have been identified for this gene. This gene is closely linked to other CTL/CTLD superfamily members on chromosome 12p13 in the natural killer gene complex region. [provided by RefSeq, Jul 2008],

**matters needing attention**

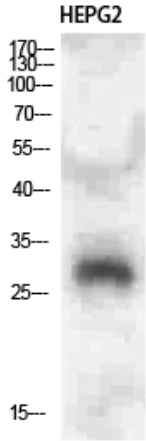
Avoid repeated freezing and thawing!

**Usage suggestions**

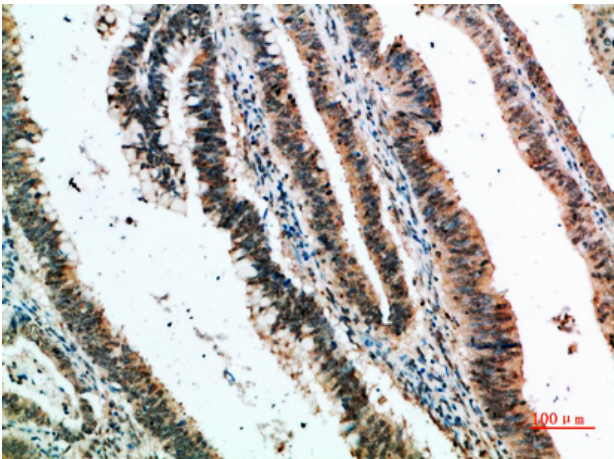
This product can be used in immunological reaction related experiments. For more information, please consult technical personnel.



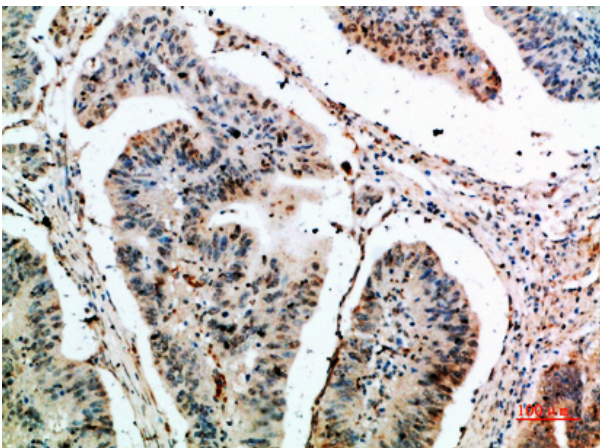
## Products Images



Western Blot analysis of HEPG2 cells using CLECSF6 Polyclonal Antibody diluted at 1:500. Secondary antibody(catalog#:RS0002) was diluted at 1:20000



Immunohistochemical analysis of paraffin-embedded human-colon-cancer, antibody was diluted at 1:200



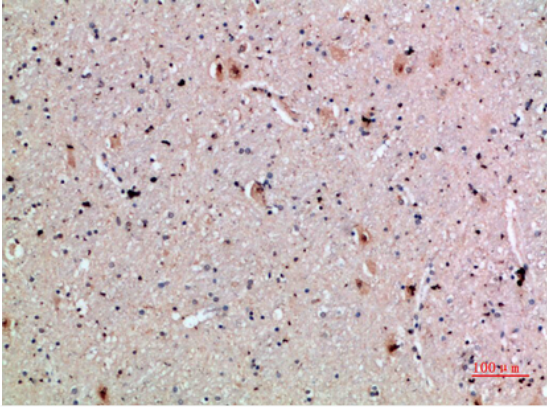
Immunohistochemical analysis of paraffin-embedded human-colon-cancer, antibody was diluted at 1:200

Nanjing BYabscience technology Co.,Ltd

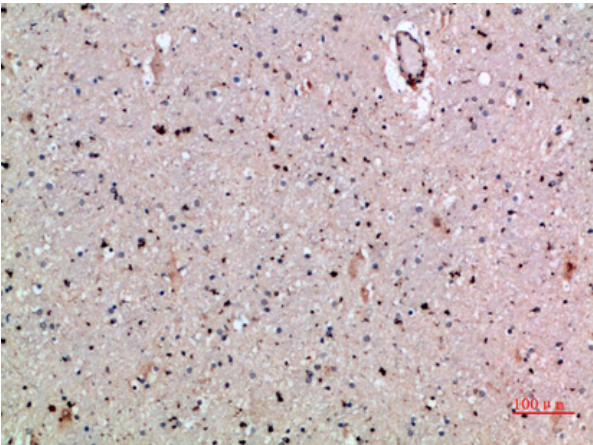
网址: [www.njbybio.com](http://www.njbybio.com)

官方热线: 025-5229-8998

监督电话: 15950492658



Immunohistochemical analysis of paraffin-embedded human-brain, antibody was diluted at 1:200



Immunohistochemical analysis of paraffin-embedded human-brain, antibody was diluted at 1:200