



ERLIN1/2 Polyclonal Antibody

Catalog No	BYab-10605
Isotype	IgG
Reactivity	Human;Mouse;Rat
Applications	WB;ELISA
Gene Name	ERLIN1/ERLIN2
Protein Name	ERLIN1/2
Immunogen	Synthesized peptide derived from ERLIN1/2 at AA range: 31-80
Specificity	ERLIN1/2 Polyclonal Antibody detects endogenous levels of ERLIN1/2
Formulation	Liquid in PBS containing 50% glycerol, 0.5% BSA and 0.02% sodium azide.
Source	Polyclonal, Rabbit,IgG
Purification	The antibody was affinity-purified from rabbit antiserum by affinity-chromatography using epitope-specific immunogen.
Dilution	WB 1:500-2000, ELISA 1:10000-20000
Concentration	1 mg/ml
Purity	≥90%
Storage Stability	-20°C/1 year
Synonyms	
Observed Band	40+42kD
Cell Pathway	Endoplasmic reticulum membrane ; Single-pass type II membrane protein . Associated with lipid raft-like domains of the endoplasmic reticulum membrane.
Tissue Specificity	Expressed in heart, placenta, liver, kidney, pancreas, prostate, testis, ovary and small intestine.
Function	similarity:Belongs to the band 7/mec-2 family.,subcellular location:Associated with lipid raft-like domains of the endoplasmic reticulum membrane.,tissue specificity:Expressed in heart, placenta, liver, kidney, pancreas, prostate, testis, ovary and small intestin.,
Background	similarity:Belongs to the band 7/mec-2 family.,subcellular location:Associated with lipid raft-like domains of the endoplasmic reticulum membrane.,tissue specificity:Expressed in heart, placenta, liver, kidney, pancreas, prostate, testis, ovary and small intestin.,

Nanjing BYabscience technology Co.,Ltd



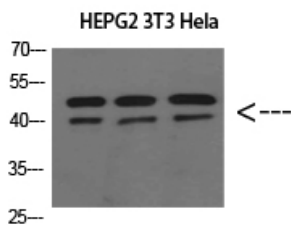
matters needing attention

Avoid repeated freezing and thawing!

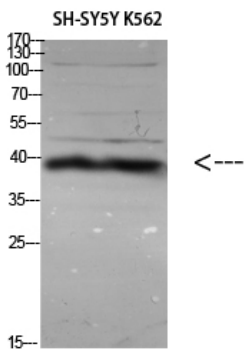
Usage suggestions

This product can be used in immunological reaction related experiments. For more information, please consult technical personnel.

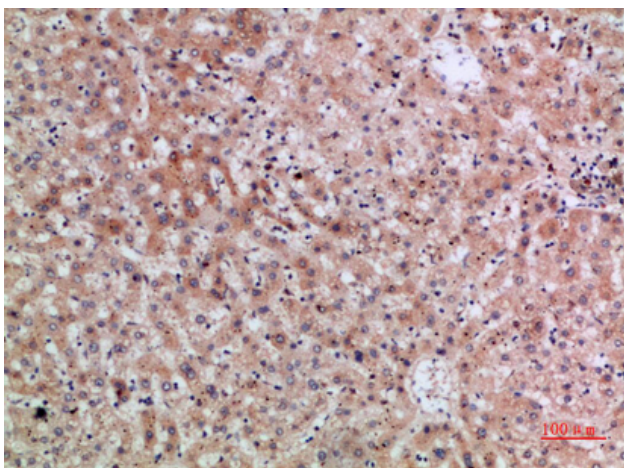
Products Images



Western Blot analysis of HEPG2 3T3 HeLa cells using ERLIN1/2 Polyclonal Antibody diluted at 1:800. Secondary antibody(catalog#:RS0002) was diluted at 1:20000

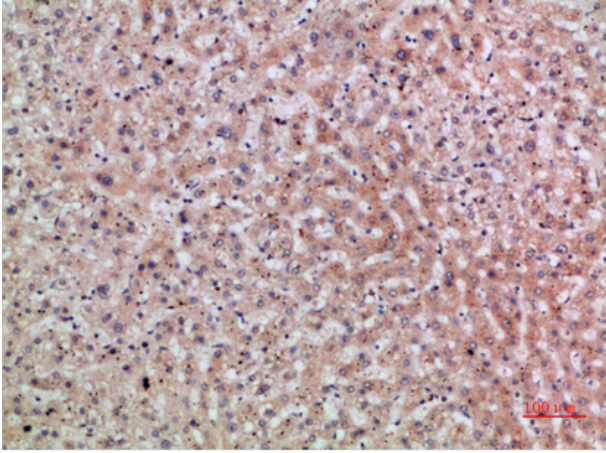


Western Blot analysis of various cells using Antibody diluted at 1:1000. Secondary antibody(catalog#:RS0002) was diluted at 1:20000



Immunohistochemical analysis of paraffin-embedded human-liver, antibody was diluted at 1:200

Nanjing BYabscience technology Co.,Ltd



Immunohistochemical analysis of paraffin-embedded human-liver, antibody was diluted at 1:200