



Nanos Homologue 1 (NANOS1) Polyclonal Antibody

Catalog No	BYab-10604
Isotype	IgG
Reactivity	Human;Rat;Mouse;
Applications	WB;ELISA;IHC
Gene Name	NANOS1
Protein Name	Nanos Homologue 1 (NANOS1)
Immunogen	Synthesized peptide derived from Nanos Homologue 1 (NANOS1) at AA range: 151-200
Specificity	Nanos Homologue 1 (NANOS1) Polyclonal Antibody detects endogenous levels of Nanos Homologue 1 (NANOS1)
Formulation	Liquid in PBS containing 50% glycerol, 0.5% BSA and 0.02% sodium azide.
Source	Polyclonal, Rabbit,IgG
Purification	The antibody was affinity-purified from rabbit antiserum by affinity-chromatography using epitope-specific immunogen.
Dilution	WB 1:500-2000;IHC-p 1:50-300; ELISA 2000-20000
Concentration	1 mg/ml
Purity	≥90%
Storage Stability	-20°C/1 year
Synonyms	Nanos homolog 1 (NOS-1) (EC_Rep1a)
Observed Band	30kD
Cell Pathway	Cytoplasm, perinuclear region . Cytoplasm . Colocalizes with SNAPIN and PUM2 in the perinuclear region of germ cells. .
Tissue Specificity	Testis and ovary (at protein level). Predominantly expressed in testis. Specifically expressed during germline development. In adult tissues, it is mainly expressed in spermatogonia, the stem cells of the germline. Also expressed during meiosis in spermatocytes. Not present in late, post-meiotic stage germ cells. Expressed in fetal ovaries, while it is weakly or not expressed in mature postmeiotic oocytes, suggesting that it may be expressed in premeiotic female germ cells. Expressed at high levels only in the E-cadherin deficient cell lines. Highly expressed in lung carcinomas and mostly detected in invasive tumor cells and its expression correlates with tumor aggressiveness.
Function	domain:The Nanos-type zinc finger is composed of two C2HC motifs, each motif binding one molecule of zinc. It is essential for the translation repression activity of the protein.,function:May regulate translation of specific mRNAs by forming a

Nanjing BYabscience technology Co.,Ltd



complex with PUM2 that associates with the 3'-UTR of mRNA targets.,similarity:Belongs to the nanos family.,similarity:Contains 1 nanos-type zinc finger.,subunit:Interacts with PUM2.,tissue specificity:Predominantly expressed in testis. Specifically expressed during germline development. In adult tissues, it is mainly expressed in spermatogonia, the stem cells of the germline. Also expressed during meiosis in spermatocytes. Not present in late, post-meiotic stage germ cells. Expressed in fetal ovaries, while it is weakly or not expressed in mature postmeiotic oocytes, suggesting that it may be expressed in premeiotic female germ cells.,

Background

This gene encodes a CCHC-type zinc finger protein that is a member of the nanos family. This protein co-localizes with the RNA-binding protein pumilio RNA-binding family member 2 and may be involved in regulating translation as a post-transcriptional repressor. Mutations in this gene are associated with spermatogenic impairment. [provided by RefSeq, Sep 2015],

matters needing attention

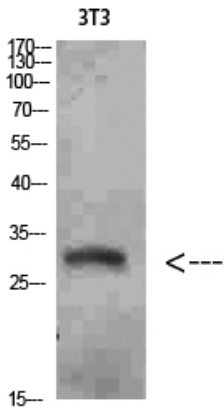
Avoid repeated freezing and thawing!

Usage suggestions

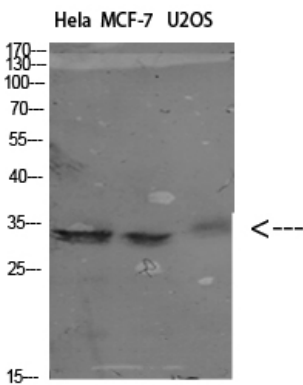
This product can be used in immunological reaction related experiments. For more information, please consult technical personnel.



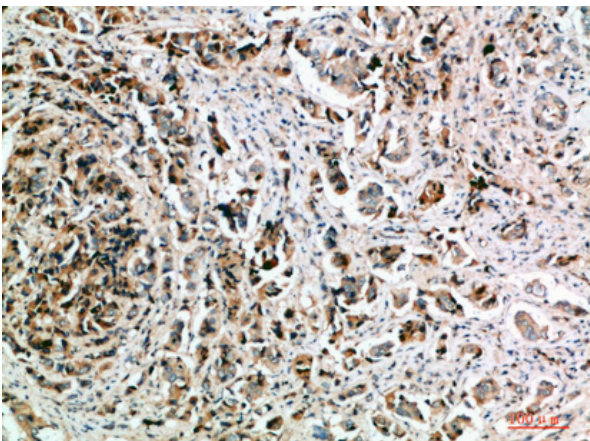
Products Images



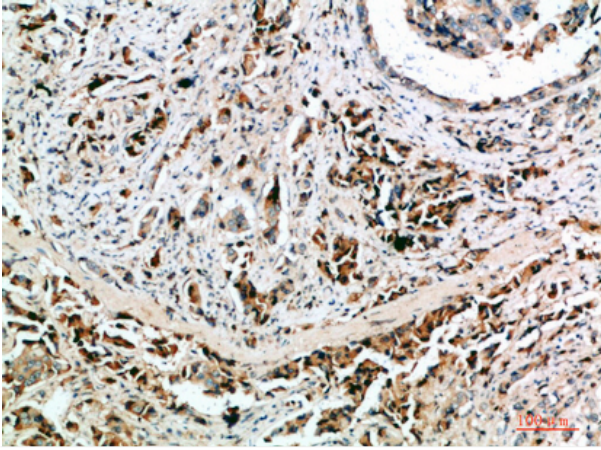
Western Blot analysis of 3T3 cells using Nanos Homologue 1 (NANOS1) Polyclonal Antibody diluted at 1:1500. Secondary antibody(catalog#:RS0002) was diluted at 1:20000



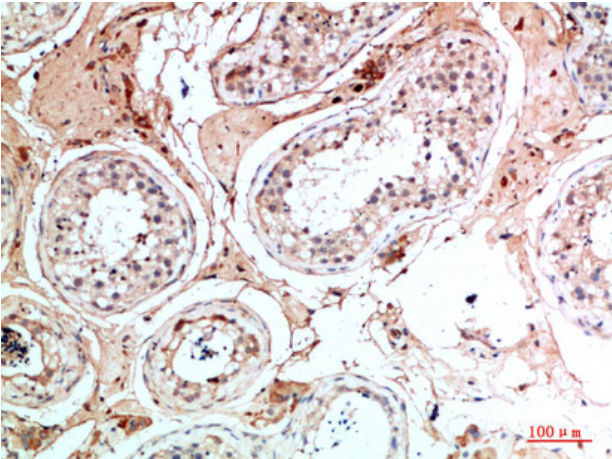
Western Blot analysis of various cells using Antibody diluted at 1:1000. Secondary antibody(catalog#:RS0002) was diluted at 1:20000



Immunohistochemical analysis of paraffin-embedded human-breast-cancer, antibody was diluted at 1:200



Immunohistochemical analysis of paraffin-embedded human-breast-cancer, antibody was diluted at 1:200



Immunohistochemical analysis of paraffin-embedded human-testis, antibody was diluted at 1:200

