



# NOP56 Polyclonal Antibody

<b>Catalog No</b>	BYab-10602
<b>Isotype</b>	IgG
<b>Reactivity</b>	Human;Mouse;Rat
<b>Applications</b>	WB;IHC;IF;ELISA
<b>Gene Name</b>	NOP56
<b>Protein Name</b>	NOP56
<b>Immunogen</b>	Synthesized peptide derived from NOP56 at AA range: 191-240
<b>Specificity</b>	NOP56 Polyclonal Antibody detects endogenous levels of NOP56
<b>Formulation</b>	Liquid in PBS containing 50% glycerol, 0.5% BSA and 0.02% sodium azide.
<b>Source</b>	Polyclonal, Rabbit,IgG
<b>Purification</b>	The antibody was affinity-purified from rabbit antiserum by affinity-chromatography using epitope-specific immunogen.
<b>Dilution</b>	WB: 1/500 - 1/2000. IHC-p: 1:100-1:300. ELISA: 1/10000.. IF 1:50-200
<b>Concentration</b>	1 mg/ml
<b>Purity</b>	≥90%
<b>Storage Stability</b>	-20°C/1 year
<b>Synonyms</b>	Nucleolar protein 56 (Nucleolar protein 5A)
<b>Observed Band</b>	65kD
<b>Cell Pathway</b>	Nucleus, nucleolus . Cytoplasm . Nucleus, nucleoplasm .
<b>Tissue Specificity</b>	Brain,Cervix carcinoma,Epithelium,Uterus,
<b>Function</b>	function:Required for 60S ribosomal subunit biogenesis.,similarity:Belongs to the NOP5/NOP56 family.,similarity:Contains 1 Nop domain.,subunit:Interacts with NOP1 and NOP58.,
<b>Background</b>	Nop56p is a yeast nucleolar protein that is part of a complex with the nucleolar proteins Nop58p and fibrillarin. Nop56p is required for assembly of the 60S ribosomal subunit and is involved in pre-rRNA processing. The protein encoded by this gene is similar in sequence to Nop56p and is also found in the nucleolus. Expansion of a GGCCTG repeat from 3-8 copies to 1500-2500 copies in an intron of this gene results in spinocerebellar ataxia 36. Multiple transcript variants encoding several different isoforms have been found for this gene, but the full-length nature of most of them has not been determined. [provided by RefSeq,

**Nanjing BYabscience technology Co.,Ltd**



Jul 2016],

**matters needing attention**

Avoid repeated freezing and thawing!

**Usage suggestions**

This product can be used in immunological reaction related experiments. For more information, please consult technical personnel.

Nanjing BYabscience technology Co.,Ltd

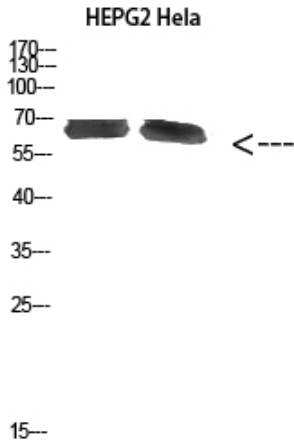
网址: [www.njbybio.com](http://www.njbybio.com)

官方热线: 025-5229-8998

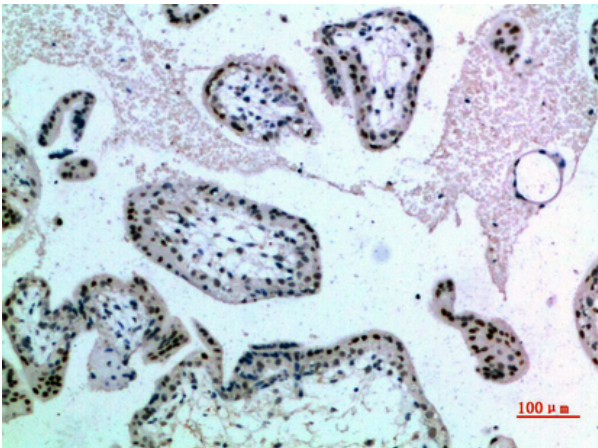
监督电话: 15950492658



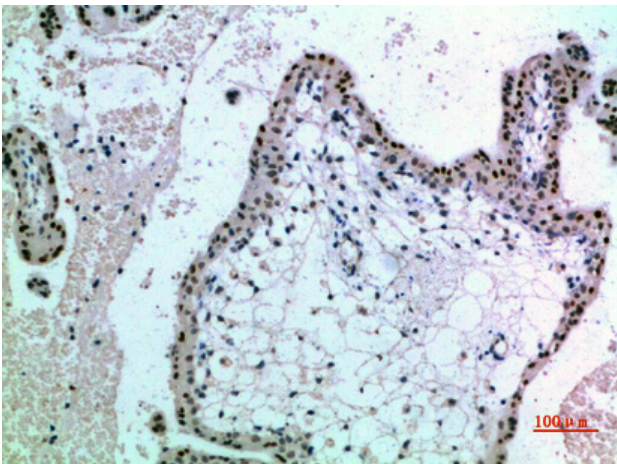
## Products Images



Western Blot analysis of HEPG2 Hela cells using NOP56 Polyclonal Antibody diluted at 1:1000. Secondary antibody(catalog#:RS0002) was diluted at 1:20000



Immunohistochemical analysis of paraffin-embedded human-placenta, antibody was diluted at 1:200



Immunohistochemical analysis of paraffin-embedded human-placenta, antibody was diluted at 1:200