



Collagen alpha-1(XXVIII)Polyclonal Antibody

Catalog No	BYab-10601
Isotype	IgG
Reactivity	Human;Mouse
Applications	WB;ELISA
Gene Name	COL28A1
Protein Name	Collagen alpha-1(XXVIII)Polyclonal Antibody
Immunogen	The antiserum was produced against synthesized peptide derived from the N-terminal region of human COL28A1. AA range:111-160
Specificity	Collagen alpha-1(XXVIII)Polyclonal Antibody detects endogenous levels of Collagen alpha-1(XXVIII)Polyclonal Antibody
Formulation	Liquid in PBS containing 50% glycerol, 0.5% BSA and 0.02% sodium azide.
Source	Polyclonal, Rabbit,IgG
Purification	The antibody was affinity-purified from rabbit antiserum by affinity-chromatography using epitope-specific immunogen.
Dilution	WB 1:500-2000, ELISA 1:10000-20000
Concentration	1 mg/ml
Purity	≥90%
Storage Stability	-20°C/1 year
Synonyms	Collagen alpha-1(XXVIII) chain
Observed Band	116kD
Cell Pathway	Secreted, extracellular space, extracellular matrix, basement membrane .
Tissue Specificity	Endometrial adenocarcinoma,Germ cell,Lung,
Function	function:May act as a cell-binding protein.,similarity:Belongs to the VWA-containing collagen family.,similarity:Contains 1 BPTI/Kunitz inhibitor domain.,similarity:Contains 2 VWFA domains.,similarity:Contains 6 collagen-like domains.,subunit:Trimer or homomer. Secreted into as a 135 kDa monomer under reducing conditions and as a homotrimer under non-reducing conditions.,
Background	COL28A1 belongs to a class of collagens containing von Willebrand factor (VWF; MIM 613160) type A (VWFA) domains (Veit et al., 2006 [PubMed 16330543]).[supplied by OMIM, Nov 2010],

Nanjing BYabscience technology Co.,Ltd



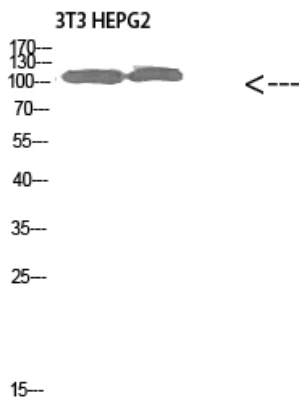
matters needing attention

Avoid repeated freezing and thawing!

Usage suggestions

This product can be used in immunological reaction related experiments. For more information, please consult technical personnel.

Products Images



Western Blot analysis of 3T3 HEPG2 cells using Collagen alpha-1(XXVIII)Polyclonal Antibody diluted at 1:1000. Secondary antibody(catalog#:RS0002) was diluted at 1:20000