



TRIF Polyclonal Antibody

Catalog No	BYab-10600
Isotype	IgG
Reactivity	Human;Rat;Mouse;
Applications	WB;IHC;IF;ELISA
Gene Name	TICAM1
Protein Name	TRIF
Immunogen	Synthesized peptide derived from TRIF at AA range: 663-712
Specificity	TRIF Polyclonal Antibody detects endogenous levels of TRIF
Formulation	Liquid in PBS containing 50% glycerol, 0.5% BSA and 0.02% sodium azide.
Source	Polyclonal, Rabbit,IgG
Purification	The antibody was affinity-purified from rabbit antiserum by affinity-chromatography using epitope-specific immunogen.
Dilution	WB 1:500-2000,IHC-p 1:50-200 ELISA 1:10000-20000. IF 1:50-200
Concentration	1 mg/ml
Purity	≥90%
Storage Stability	-20°C/1 year
Synonyms	TIR domain-containing adapter molecule 1 (TICAM-1;Proline-rich, vinculin and TIR domain-containing protein B;Putative NF-kappa-B-activating protein 502H;Toll-interleukin-1 receptor domain-containing adapter protein inducing interferon beta;TIR domain-containing adapter protein inducing IFN-beta)
Observed Band	80kD
Cell Pathway	Cytoplasmic vesicle, autophagosome . Cytoplasm, cytosol . Mitochondrion . Colocalizes with UBQLN1 in the autophagosome (PubMed:21695056). Colocalizes in the cytosol with DDX1, DDX21 and DHX36. Colocalizes in the mitochondria with DDX1 and poly(I:C) RNA ligand. The multi-helicase-TICAM1 complex may translocate to the mitochondria upon poly(I:C) RNA ligand stimulation (By similarity). .
Tissue Specificity	Ubiquitously expressed but with higher levels in liver.
Function	domain:The N-terminal region is essential for activation of the IFNB promoter activity.,function:Involved in innate immunity against invading pathogens. Adapter used by TLR3 and TLR4 (through TICAM2) to mediate NF-kappa-B and interferon-regulatory factor (IRF) activation, and to induce apoptosis. Ligand

Nanjing BYabscience technology Co.,Ltd



binding to these receptors results in TRIF recruitment through its TIR domain. Distinct protein-interaction motifs allow recruitment of the effector proteins TBK1, TRAF6 and RIPK1, which in turn, lead to the activation of transcription factors IRF3 and IRF7, NF-kappa-B and FADD respectively. PTM:Phosphorylated by TBK1. similarity:Contains 1 TIR domain. subunit:Homodimer (Probable). Interacts with the TIR domain of TLR3. Interacts with AZI2, TBK1, IRF3 and IRF7. Interacts with TRAF6. Interacts with TICAM2 in TLR4 recruitment. Interaction with PIAS4 inhibits the TICAM1-induced NF-kappa-B, I

Background

This gene encodes an adaptor protein containing a Toll/interleukin-1 receptor (TIR) homology domain, which is an intracellular signaling domain that mediates protein-protein interactions between the Toll-like receptors (TLRs) and signal-transduction components. This protein is involved in native immunity against invading pathogens. It specifically interacts with toll-like receptor 3, but not with other TLRs, and this association mediates dsRNA induction of interferon-beta through activation of nuclear factor kappa-B, during an antiviral immune response. [provided by RefSeq, Jan 2012],

matters needing attention

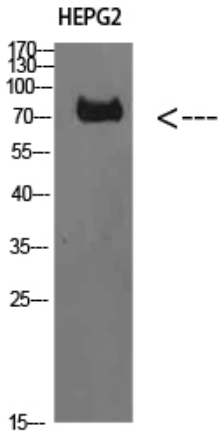
Avoid repeated freezing and thawing!

Usage suggestions

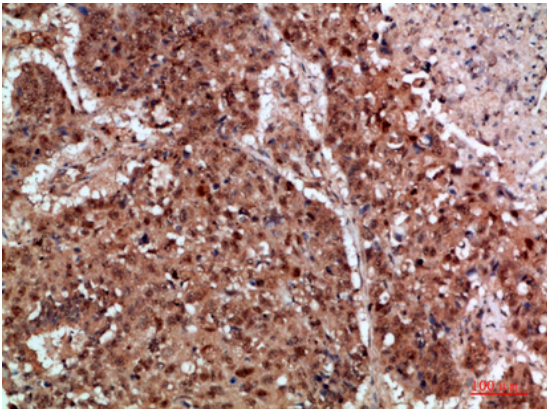
This product can be used in immunological reaction related experiments. For more information, please consult technical personnel.



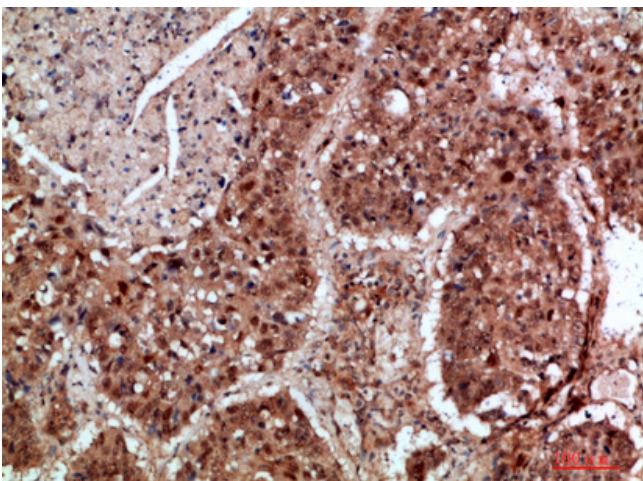
Products Images



Western Blot analysis of HEPG2 cells using TRIF Polyclonal Antibody diluted at 1:1000. Secondary antibody(catalog#:RS0002) was diluted at 1:20000



Immunohistochemical analysis of paraffin-embedded human-lung-cancer, antibody was diluted at 1:200



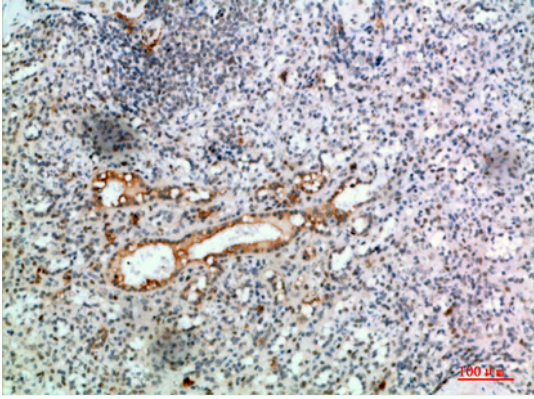
Immunohistochemical analysis of paraffin-embedded human-lung-cancer, antibody was diluted at 1:200

Nanjing BYabscience technology Co.,Ltd

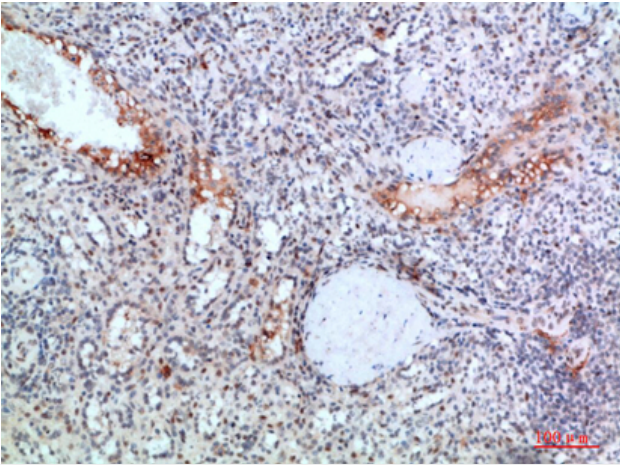
网址: www.njbybio.com

官方热线: 025-5229-8998

监督电话: 15950492658



Immunohistochemical analysis of paraffin-embedded human-spleen, antibody was diluted at 1:200



Immunohistochemical analysis of paraffin-embedded human-spleen, antibody was diluted at 1:200