



GABARAP Polyclonal Antibody

Catalog No	BYab-10592
Isotype	IgG
Reactivity	Human;Mouse;Rat
Applications	WB;ELISA
Gene Name	GABARAPL2 FLC3A GEF2
Protein Name	GABARAP
Immunogen	Synthetic Peptide of GABARAP AA range: 26-75
Specificity	GABARAP Polyclonal Antibody detects endogenous levels of GABARAP
Formulation	Liquid in PBS containing 50% glycerol, 0.5% BSA and 0.02% sodium azide.
Source	Polyclonal, Rabbit,IgG
Purification	The antibody was affinity-purified from rabbit antiserum by affinity-chromatography using epitope-specific immunogen.
Dilution	WB 1:500-2000, ELISA 1:10000-20000
Concentration	1 mg/ml
Purity	≥90%
Storage Stability	-20°C/1 year
Synonyms	GABA(A) receptor-associated protein-like 2
Observed Band	17kD
Cell Pathway	Cytoplasmic vesicle, autophagosome . Endoplasmic reticulum membrane . Golgi apparatus .
Tissue Specificity	Ubiquitous. Expressed at high levels in the brain, heart, prostate, ovary, spleen and skeletal muscle. Expressed at very low levels in lung, thymus and small intestine.
Function	function:Involved in intra-Golgi traffic. Modulates intra-Golgi transport through coupling between NSF activity and SNAREs activation. It first stimulates the ATPase activity of NSF which in turn stimulates the association with GOSR1.,PTM:Phosphorylated upon DNA damage, probably by ATM or ATR.,similarity:Belongs to the MAP1 LC3 family.,subunit:Monomer. Interacts with GABRG2, NSF, GOSR1 and beta-tubulin (By similarity). Interacts with ULK1.,tissue specificity:Ubiquitous. Expressed at high levels in the brain, heart, prostate, ovary, spleen and skeletal muscle. Expressed at very low levels in lung, thymus and small intestine.,

Nanjing BYabscience technology Co.,Ltd



Background

function:Involved in intra-Golgi traffic. Modulates intra-Golgi transport through coupling between NSF activity and SNAREs activation. It first stimulates the ATPase activity of NSF which in turn stimulates the association with GOSR1.,PTM:Phosphorylated upon DNA damage, probably by ATM or ATR.,similarity:Belongs to the MAP1 LC3 family.,subunit:Monomer. Interacts with GABRG2, NSF, GOSR1 and beta-tubulin (By similarity). Interacts with ULK1.,tissue specificity:Ubiquitous. Expressed at high levels in the brain, heart, prostate, ovary, spleen and skeletal muscle. Expressed at very low levels in lung, thymus and small intestine.,

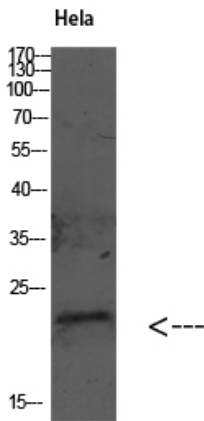
matters needing attention

Avoid repeated freezing and thawing!

Usage suggestions

This product can be used in immunological reaction related experiments. For more information, please consult technical personnel.

Products Images



Western Blot analysis of various cells using Antibody diluted at 1:1000. Secondary antibody(catalog#:RS0002) was diluted at 1:20000