



Hamartin Polyclonal Antibody

Catalog No	BYab-10589
Isotype	IgG
Reactivity	Human;Rat;Mouse;
Applications	WB;ELISA
Gene Name	TSC1 KIAA0243 TSC
Protein Name	Hamartin
Immunogen	Synthesized peptide derived from Hamartin . at AA range: 360-440
Specificity	Hamartin Polyclonal Antibody detects endogenous levels of Hamartin
Formulation	Liquid in PBS containing 50% glycerol, 0.5% BSA and 0.02% sodium azide.
Source	Polyclonal, Rabbit,IgG
Purification	The antibody was affinity-purified from rabbit antiserum by affinity-chromatography using epitope-specific immunogen.
Dilution	WB 1:500-2000, ELISA 1:10000-20000
Concentration	1 mg/ml
Purity	≥90%
Storage Stability	-20°C/1 year
Synonyms	tuberous sclerosis 1
Observed Band	130kD
Cell Pathway	Cytoplasm . Membrane ; Peripheral membrane protein . At steady state found in association with membranes. .
Tissue Specificity	Highly expressed in skeletal muscle, followed by heart, brain, placenta, pancreas, lung, liver and kidney. Also expressed in embryonic kidney cells.
Function	disease:Defects in TSC1 are the cause of tuberous sclerosis complex (TSC) [MIM:191100]. The molecular basis of TSC is a functional impairment of the hamartin-tuberin complex. TSC is an autosomal dominant multi-system disorder that affects especially the brain, kidneys, heart, and skin. TSC is characterized by hamartomas (benign overgrowths predominantly of a cell or tissue type that occurs normally in the organ) and hamartias (developmental abnormalities of tissue combination). Clinical symptoms can range from benign hypopigmented macules of the skin to profound mental retardation with intractable seizures to premature death from a variety of disease-associated causes.,disease:Defects in TSC1 may be a cause of focal cortical dysplasia of Taylor balloon cell type (FCDBC) [MIM:607341]. FCDBC is a subtype of cortical displasias linked to

Nanjing BYabscience technology Co.,Ltd



chronic intractable epilepsy. Cortical dysplasias di

Background

This gene encodes a growth inhibitory protein thought to play a role in the stabilization of tuberin. Mutations in this gene have been associated with tuberous sclerosis. Alternative splicing results in multiple transcript variants. [provided by RefSeq, Jun 2009],

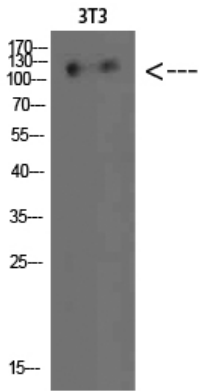
matters needing attention

Avoid repeated freezing and thawing!

Usage suggestions

This product can be used in immunological reaction related experiments. For more information, please consult technical personnel.

Products Images



Western Blot analysis of 3T3 cells using Hamartin Polyclonal Antibody diluted at 1:500. Secondary antibody(catalog#:RS0002) was diluted at 1:20000