



Atg9a Polyclonal Antibody

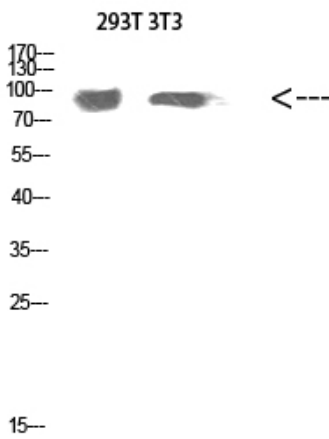
Catalog No	BYab-10587
Isotype	IgG
Reactivity	Human;Mouse;Rat
Applications	WB;ELISA
Gene Name	ATG9A APG9L1
Protein Name	Atg9a
Immunogen	Synthetic Peptide of Atg9a
Specificity	Atg9a Polyclonal Antibody detects endogenous levels of Atg9a
Formulation	Liquid in PBS containing 50% glycerol, 0.5% BSA and 0.02% sodium azide.
Source	Polyclonal, Rabbit,IgG
Purification	The antibody was affinity-purified from rabbit antiserum by affinity-chromatography using epitope-specific immunogen.
Dilution	WB 1:500-2000, ELISA 1:10000-20000
Concentration	1 mg/ml
Purity	≥90%
Storage Stability	-20°C/1 year
Synonyms	ATG9 autophagy related 9 homolog A (S. cerevisiae)
Observed Band	85kD
Cell Pathway	Preautophagosomal structure membrane ; Multi-pass membrane protein . Cytoplasmic vesicle, autophagosome membrane ; Multi-pass membrane protein . Golgi apparatus, trans-Golgi network membrane ; Multi-pass membrane protein . Late endosome membrane ; Multi-pass membrane protein . Recycling endosome membrane ; Multi-pass membrane protein . Endoplasmic reticulum membrane ; Multi-pass membrane protein . Mitochondrion membrane ; Multi-pass membrane protein . Mainly localizes to the trans-Golgi network (TGN) and the endosomal system; cycles between them though vesicle trafficking (PubMed:27316455, PubMed:27663665). Export from the TGN to promote formation of autophagosomes is mediated by the AP-4 complex (PubMed:29180427, PubMed:30262884). Under amino acid starvation or rapamycin treatment, redist
Tissue Specificity	Brain,Embryo,Epithelium,Fetal brain,Lung endothelial cell,Lymph,Rectum tumor,Testis
Function	function:Plays a role in autophagy.,similarity:Belongs to the ATG9 family.,

Nanjing BYabscience technology Co.,Ltd



Background	function:Plays a role in autophagy.,similarity:Belongs to the ATG9 family.,
matters needing attention	Avoid repeated freezing and thawing!
Usage suggestions	This product can be used in immunological reaction related experiments. For more information, please consult technical personnel.

Products Images



Western Blot analysis of 293T 3T3 cells using Atg9a Polyclonal Antibody diluted at 1:800. Secondary antibody(catalog#:RS0002) was diluted at 1:20000