



RHEB Polyclonal Antibody

Catalog No	BYab-10586
Isotype	IgG
Reactivity	Human;Mouse;Rat;Predicted:Cow
Applications	WB;ELISA;IHC
Gene Name	RHEB RHEB2
Protein Name	RHEB
Immunogen	Synthetic Peptide of RHEB
Specificity	This antibody detects endogenous levels of RHEB Polyclonal Antibody at Human;Mouse;Rat;Predicted:Cow, It doesn't react with total protein.
Formulation	Liquid in PBS containing 50% glycerol, 0.5% BSA and 0.02% sodium azide.
Source	Polyclonal, Rabbit,IgG
Purification	The antibody was affinity-purified from rabbit antiserum by affinity-chromatography using epitope-specific immunogen.
Dilution	WB 1:500-2000;IHC-p 1:50-300; ELISA 2000-20000
Concentration	1 mg/ml
Purity	≥90%
Storage Stability	-20°C/1 year
Synonyms	Ras homolog enriched in brain
Observed Band	20kD
Cell Pathway	Endomembrane system ; Lipid-anchor ; Cytoplasmic side . Golgi apparatus membrane ; Lipid-anchor ; Cytoplasmic side . Cytoplasm, cytosol . Endoplasmic reticulum membrane ; Lipid-anchor ; Cytoplasmic side .
Tissue Specificity	Ubiquitous. Highest levels observed in skeletal and cardiac muscle.
Function	function:Not known; binds GTP and exhibits intrinsic GTPase activity.;similarity:Belongs to the small GTPase superfamily. Rheb family.;tissue specificity:Ubiquitous. Highest levels observed in skeletal and cardiac muscle.,
Background	This gene is a member of the small GTPase superfamily and encodes a lipid-anchored, cell membrane protein with five repeats of the RAS-related GTP-binding region. This protein is vital in regulation of growth and cell cycle progression due to its role in the insulin/TOR/S6K signaling pathway. The protein has GTPase activity and shuttles between a GDP-bound form and a GTP-bound form, and farnesylation of the protein is required for this activity. Three pseudogenes have been mapped, two on chromosome 10 and one on

Nanjing BYabscience technology Co.,Ltd



chromosome 22. [provided by RefSeq, Jul 2008],

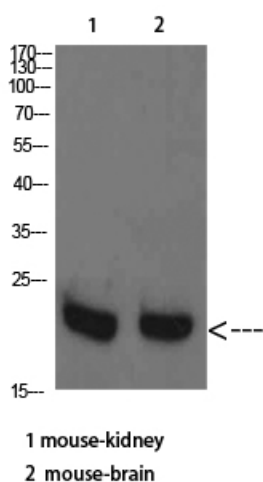
matters needing attention

Avoid repeated freezing and thawing!

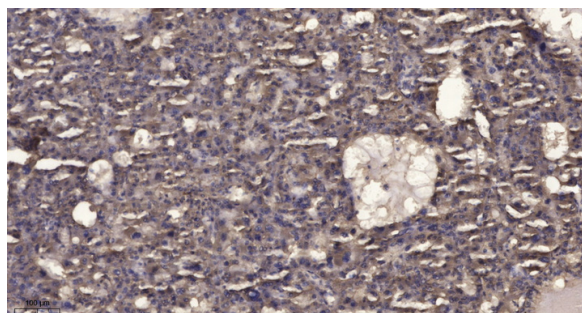
Usage suggestions

This product can be used in immunological reaction related experiments. For more information, please consult technical personnel.

Products Images



Western Blot analysis of mouse-kidney mouse-brain cells using RHEB Polyclonal Antibody diluted at 1:2000. Secondary antibody(catalog#:RS0002) was diluted at 1:20000



Immunohistochemical analysis of paraffin-embedded human liver cancer. 1, Antibody was diluted at 1:200(4° overnight). 2, Tris-EDTA,pH9.0 was used for antigen retrieval. 3,Secondary antibody was diluted at 1:200(room temperature, 45min).

Nanjing BYabscience technology Co.,Ltd