



STYK1/NOK (Phospho-Tyr327) rabbit pAb

Catalog No	BYab-10565
Isotype	IgG
Reactivity	Human; Mouse;Rat
Applications	WB
Gene Name	STYK1 NOK
Protein Name	STYK1/NOK (Phospho-Tyr327)
Immunogen	Synthesized peptide derived from human STYK1/NOK (Phospho-Tyr327)
Specificity	This antibody detects endogenous levels of STYK1/NOK (Phospho-Tyr327) at Human, Mouse,Rat
Formulation	Liquid in PBS containing 50% glycerol, and 0.221% sodium azide.
Source	Polyclonal, Rabbit,IgG
Purification	The antibody was affinity-purified from rabbit serum by affinity-chromatography using specific immunogen.
Dilution	WB 1:500-2000
Concentration	1 mg/ml
Purity	≥90%
Storage Stability	-20°C/1 year
Synonyms	Tyrosine-protein kinase STYK1 (EC 2.7.10.2) (Novel oncogene with kinase domain) (Protein PK-unique) (Serine/threonine/tyrosine kinase 1)
Observed Band	47kD
Cell Pathway	Membrane ; Single-pass membrane protein .
Tissue Specificity	Widely expressed. Highly expressed in brain, placenta and prostate. Expressed in tumor cells such as hepatoma cells L-02, cervix carcinoma cells HeLa, ovary cancer cells Ho8910 and chronic myelogenous leukemia cells K-562, but not in other tumor cells such as epidermoid carcinoma (A-431). Undetectable in most normal lung tissues, widely expressed in lung cancers.
Function	catalytic activity:ATP + a [protein]-L-tyrosine = ADP + a [protein]-L-tyrosine phosphate.,function:Probable tyrosine protein-kinase, which has strong transforming capabilities on a variety of cell lines. When overexpressed, it can also induce tumor cell invasion as well as metastasis in distant organs. May act by activating both MAP kinase and phosphatidylinositol 3'-kinases (PI3K) pathways.,similarity:Belongs to the protein kinase superfamily. Tyr protein kinase family.,similarity:Contains 1 protein kinase domain.,tissue specificity:Widely expressed. Highly expressed in brain, placenta and prostate. Expressed in tumor

Nanjing BYabscience technology Co.,Ltd



cells such as hepatoma cells LO2, cervix carcinoma cells HeLa, ovary cancer cells Ho8910 and chronic myelogenous leukemia cells K562, but not in other tumor cells such as epidermoid carcinoma (A431). Undetectable in most normal lung tissues, widely expressed in lung cancer

Background

Receptor protein tyrosine kinases, like STYK1, play important roles in diverse cellular and developmental processes, such as cell proliferation, differentiation, and survival (Liu et al., 2004 [PubMed 15150103]).[supplied by OMIM, Mar 2008],

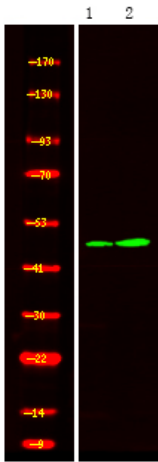
matters needing attention

Avoid repeated freezing and thawing!

Usage suggestions

This product can be used in immunological reaction related experiments. For more information, please consult technical personnel.

Products Images



Western Blot analysis of 1 HeLa cell, 2 LPS 100ng/mL 30min treated ,using primary antibody at 1:1000 dilution. Secondary antibody(catalog#:RS23920) was diluted at 1:10000