



R-Ras (Phospho-Tyr66) rabbit pAb

Catalog No	BYab-10564
Isotype	IgG
Reactivity	Human; Mouse;Rat
Applications	WB
Gene Name	RRAS
Protein Name	R-Ras (Phospho-Tyr66)
Immunogen	Synthesized peptide derived from human R-Ras (Phospho-Tyr66)
Specificity	This antibody detects endogenous levels of R-Ras (Phospho-Tyr66) at Human, Mouse,Rat
Formulation	Liquid in PBS containing 50% glycerol, and 0.220% sodium azide.
Source	Polyclonal, Rabbit,IgG
Purification	The antibody was affinity-purified from rabbit serum by affinity-chromatography using specific immunogen.
Dilution	WB 1:500-2000
Concentration	1 mg/ml
Purity	≥90%
Storage Stability	-20°C/1 year
Synonyms	Ras-related protein R-Ras (p23)
Observed Band	
Cell Pathway	Cell membrane ; Lipid-anchor ; Cytoplasmic side . Inner surface of plasma membrane possibly with attachment requiring acylation of the C-terminal cysteine (By similarity with RAS).
Tissue Specificity	Adipocyte,Brain,Uterus,
Function	function:Regulates the organization of the actin cytoskeleton.,similarity:Belongs to the small GTPase superfamily. Ras family.,subcellular location:Inner surface of plasma membrane possibly with attachment requiring acylation of the C-terminal cysteine (By similarity with RAS).,subunit:Interacts with PLCE1.,
Background	The protein encoded by this gene is a small GTPase involved in diverse processes including angiogenesis, vascular homeostasis and regeneration, cell adhesion, and neuronal axon guidance. Mutations in this gene are found in many invasive cancers. [provided by RefSeq, Jul 2015],

Nanjing BYabscience technology Co.,Ltd



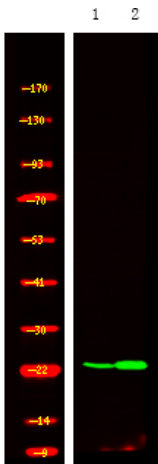
matters needing attention

Avoid repeated freezing and thawing!

Usage suggestions

This product can be used in immunological reaction related experiments. For more information, please consult technical personnel.

Products Images



Western Blot analysis of A549 cell,2, LPS 100ng/mL 30min treated ,using primary antibody at 1:1000 dilution. Secondary antibody(catalog#:RS23920) was diluted at 1:10000