



NDEL1 (Phospho-Thr219) rabbit pAb

Catalog No	BYab-10563
Isotype	IgG
Reactivity	Human; Mouse;Rat
Applications	WB
Gene Name	NDEL1 EOPA MITAP1 NUDEL
Protein Name	NDEL1 (Phospho-Thr219)
Immunogen	Synthesized peptide derived from human NDEL1 (Phospho-Thr219)
Specificity	This antibody detects endogenous levels of NDEL1 (Phospho-Thr219) at Human, Mouse,Rat
Formulation	Liquid in PBS containing 50% glycerol, and 0.219% sodium azide.
Source	Polyclonal, Rabbit,IgG
Purification	The antibody was affinity-purified from rabbit serum by affinity-chromatography using specific immunogen.
Dilution	WB 1:500-2000
Concentration	1 mg/ml
Purity	≥90%
Storage Stability	-20°C/1 year
Synonyms	Nuclear distribution protein nudE-like 1 (Protein Nudel) (Mitosis-associated protein 1)
Observed Band	38kD
Cell Pathway	Cytoplasm, cytoskeleton. Cytoplasm, cytoskeleton, microtubule organizing center, centrosome. Chromosome, centromere, kinetochore. Cytoplasm, cytoskeleton, spindle. Localizes to the cell body of the motor neurons and colocalizes with assembled neurofilaments within axonal processes. Localizes to the microtubules of the manchette in elongated spermatids. Colocalizes with DISC1 in the perinuclear region, including the centrosome (By similarity). Localizes to the interphase centrosome and the mitotic spindle. Localizes to the kinetochore in a CENPF-dependent manner. .
Tissue Specificity	Expressed in brain, heart, kidney, liver, lung, pancreas, placenta and skeletal muscle.
Function	caution:The sequence shown here is derived from an Ensembl automatic analysis pipeline and should be considered as preliminary data.,caution:Was originally (PubMed:15728732) thought to function as an oligopeptidase (NUDEL-oligopeptidase or endooligopeptidase A) which could regulate peptide

Nanjing BYabscience technology Co.,Ltd



levels relevant to brain function.,developmental stage:Expression peaks in mitosis.,function:Facilitates the polymerization of neurofilaments from the individual subunits NEFH and NEFL (By similarity). Required for organization of the cellular microtubule array and microtubule anchoring at the centrosome. May regulate microtubule organization at least in part by targeting the microtubule severing protein KATNA1 to the centrosome. Also positively regulates the activity of the minus-end directed microtubule motor protein dynein. May enhance dynein-mediated microtubule sliding by targeting dynein to the m

Background

This gene encodes a coiled-coil protein that plays a role in multiple processes including cytoskeletal organization, cell signaling and neuron migration, outgrowth and maintenance. Alternatively spliced transcript variants encoding multiple isoforms have been observed for this gene, and a pseudogene of this gene is located on the long arm of chromosome X. [provided by RefSeq, Mar 2012],

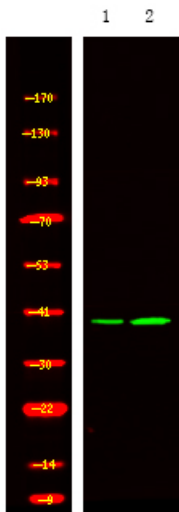
matters needing attention

Avoid repeated freezing and thawing!

Usage suggestions

This product can be used in immunological reaction related experiments. For more information, please consult technical personnel.

Products Images



Western Blot analysis of 1 HepG2 cell 2, LPS 100ng/mL 30min treated ,using primary antibody at 1:1000 dilution. Secondary antibody(catalog#:RS23920) was diluted at 1:10000