



MKP-7 (Phospho-Ser446) rabbit pAb

Catalog No	BYab-10556
Isotype	IgG
Reactivity	Human; Mouse;Rat
Applications	WB
Gene Name	DUSP16 KIAA1700 MKP7
Protein Name	MKP-7 (Phospho-Ser446)
Immunogen	Synthesized peptide derived from human MKP-7 (Phospho-Ser446)
Specificity	This antibody detects endogenous levels of MKP-7 (Phospho-Ser446) at Human, Mouse,Rat
Formulation	Liquid in PBS containing 50% glycerol, and 0.212% sodium azide.
Source	Polyclonal, Rabbit,IgG
Purification	The antibody was affinity-purified from rabbit serum by affinity-chromatography using specific immunogen.
Dilution	WB 1:500-2000
Concentration	1 mg/ml
Purity	≥90%
Storage Stability	-20°C/1 year
Synonyms	Dual specificity protein phosphatase 16 (EC 3.1.3.16) (EC 3.1.3.48) (Mitogen-activated protein kinase phosphatase 7) (MAP kinase phosphatase 7) (MKP-7)
Observed Band	
Cell Pathway	Cytoplasm. Nucleus. Cytoplasmic vesicle. After dissociation upon AGTR stimulation, re-associates with ARRB2 on endocytic vesicles.
Tissue Specificity	Bone marrow,Brain,Duodenum,PCR rescued clones,
Function	catalytic activity:A phosphoprotein + H(2)O = a protein + phosphate.,catalytic activity:Protein tyrosine phosphate + H(2)O = protein tyrosine + phosphate.,function:Involved in the inactivation of MAP kinases.,similarity:Belongs to the protein-tyrosine phosphatase family. Non-receptor class dual specificity subfamily.,similarity:Contains 1 rhodanese domain.,similarity:Contains 1 tyrosine-protein phosphatase domain.,
Background	dual specificity phosphatase 16(DUSP16) Homo sapiens This gene encodes a mitogen-activated protein kinase phosphatase that is a member of the dual specificity protein phosphatase subfamily. These phosphatases inactivate their

Nanjing BYabscience technology Co.,Ltd



target kinases by dephosphorylating both the phosphoserine/threonine and phosphotyrosine residues. The encoded protein specifically regulates the c-Jun amino-terminal kinase (JNK) and extracellular signal-regulated kinase (ERK) pathways.[provided by RefSeq, May 2010],

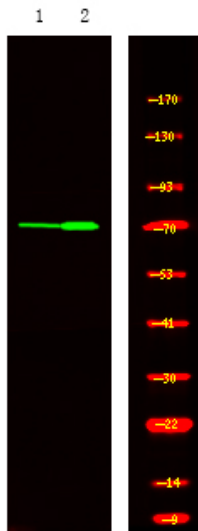
matters needing attention

Avoid repeated freezing and thawing!

Usage suggestions

This product can be used in immunological reaction related experiments. For more information, please consult technical personnel.

Products Images



Western Blot analysis of 1 HeLa cell, 2, LPS 100ng/mL 30min treated ,using primary antibody at 1:1000 dilution. Secondary antibody(catalog#:RS23920) was diluted at 1:10000