



Kizuna (Phospho-Thr379) rabbit pAb

Catalog No	BYab-10555
Isotype	IgG
Reactivity	Human; Mouse;Rat
Applications	WB
Gene Name	PLK1S1 C20orf19 KIZ NCRNA00153 HT013
Protein Name	Kizuna (Phospho-Thr379)
Immunogen	Synthesized peptide derived from human Kizuna (Phospho-Thr379)
Specificity	This antibody detects endogenous levels of Kizuna (Phospho-Thr379) at Human, Mouse,Rat
Formulation	Liquid in PBS containing 50% glycerol, and 0.211% sodium azide.
Source	Polyclonal, Rabbit,IgG
Purification	The antibody was affinity-purified from rabbit serum by affinity-chromatography using specific immunogen.
Dilution	WB 1:500-2000
Concentration	1 mg/ml
Purity	≥90%
Storage Stability	-20°C/1 year
Synonyms	Centrosomal protein kizuna (Polo-like kinase 1 substrate 1)
Observed Band	
Cell Pathway	Cytoplasm, cytoskeleton, microtubule organizing center, centrosome . Cytoplasm, cytoskeleton, cilium basal body . Localizes to centrosomes throughout the cell cycle. After centrosome duplication, it usually remains associated only with the mother centrosome, containing the older mature centriole and particles surrounding it. During prophase, additional particles accumulate around both separating centrosomes. Does not accumulate at the microtubule minus ends, but instead localizes to the centrosomes and centrosome-surrounding area in a microtubule-independent and dependent manner, respectively. .
Tissue Specificity	Uterus,
Function	
Background	

Nanjing BYabscience technology Co.,Ltd



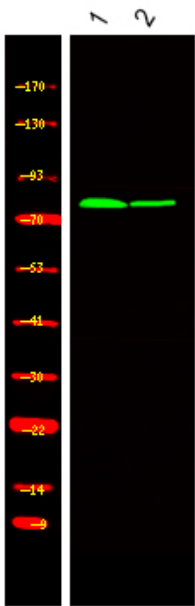
matters needing attention

Avoid repeated freezing and thawing!

Usage suggestions

This product can be used in immunological reaction related experiments. For more information, please consult technical personnel.

Products Images



Western Blot analysis of HeLa cell, 2, LPS 100ng/mL 30min treated ,using primary antibody at 1:1000 dilution. Secondary antibody(catalog#:RS23920) was diluted at 1:10000