



BORA (Phospho-Ser497) rabbit pAb

Catalog No	BYab-10553
Isotype	IgG
Reactivity	Human; Mouse;Rat
Applications	WB
Gene Name	BORA C13orf34
Protein Name	BORA (Phospho-Ser497)
Immunogen	Synthesized peptide derived from human BORA (Phospho-Ser497)
Specificity	This antibody detects endogenous levels of BORA (Phospho-Ser497) at Human, Mouse,Rat
Formulation	Liquid in PBS containing 50% glycerol, and 0.209% sodium azide.
Source	Polyclonal, Rabbit,IgG
Purification	The antibody was affinity-purified from rabbit serum by affinity-chromatography using specific immunogen.
Dilution	WB 1:500-2000
Concentration	1 mg/ml
Purity	≥90%
Storage Stability	-20°C/1 year
Synonyms	Protein aurora borealis (HsBora)
Observed Band	
Cell Pathway	cytosol,meiotic spindle,
Tissue Specificity	Bone marrow,Leiomyosarcoma,Rhabdomyosarcoma,Small intestine,Testis carcinom
Function	function:Required for the activation of Aurora-A (AURKA/STK6) at the onset of mitosis.,PTM:Phosphorylated by AURKA/STK6.,similarity:Belongs to the BORA family.,subunit:Interacts with AURKA/STK6.,
Background	BORA is an activator of the protein kinase Aurora A (AURKA; MIM 603072), which is required for centrosome maturation, spindle assembly, and asymmetric protein localization during mitosis (Hutterer et al., 2006 [PubMed 16890155]).[supplied by OMIM, Mar 2008],
matters needing attention	Avoid repeated freezing and thawing!

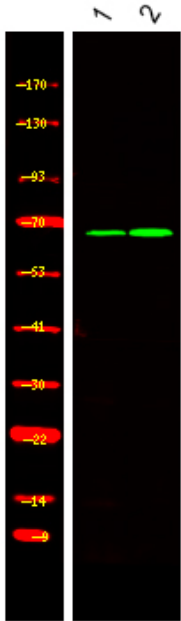
Nanjing BYabscience technology Co.,Ltd



Usage suggestions

This product can be used in immunological reaction related experiments. For more information, please consult technical personnel.

Products Images



Western Blot analysis of 1 Jurkat, 2, LPS 100ng/mL 30min treated ,using primary antibody at 1:1000 dilution. Secondary antibody(catalog#:RS23920) was diluted at 1:10000