



Shc3 (Phospho-Tyr424) rabbit pAb

Catalog No	BYab-10542
Isotype	IgG
Reactivity	Human; Mouse;Rat
Applications	WB
Gene Name	SHC3 NSHC SHCC
Protein Name	Shc3 (Phospho-Tyr424)
Immunogen	Synthesized peptide derived from human Shc3 (Phospho-Tyr424)
Specificity	This antibody detects endogenous levels of Shc3 (Phospho-Tyr424) at Human, Mouse,Rat
Formulation	Liquid in PBS containing 50% glycerol, and 0.198% sodium azide.
Source	Polyclonal, Rabbit,IgG
Purification	The antibody was affinity-purified from rabbit serum by affinity-chromatography using specific immunogen.
Dilution	WB 1:500-2000
Concentration	1 mg/ml
Purity	≥90%
Storage Stability	-20°C/1 year
Synonyms	SHC-transforming protein 3 (Neuronal Shc) (N-Shc) (Protein Rai) (SHC-transforming protein C) (Src homology 2 domain-containing-transforming protein C3) (SH2 domain protein C3)
Observed Band	
Cell Pathway	cytosol,plasma membrane,
Tissue Specificity	Mainly expressed in brain. Hardly detectable in other tissues, except in pancreas. Highly expressed in the cerebral cortex, frontal and temporal lobes, occipital pole, hippocampus, caudate nucleus and amygdala. Expressed at low level in the cerebellum, medulla and spinal cord.
Function	function:Signaling adapter that couples activated growth factor receptors to signaling pathway in neurons. Involved in the signal transduction pathways of neurotrophin-activated Trk receptors in cortical neurons.,PTM:Tyrosine phosphorylated.,similarity:Contains 1 PID domain.,similarity:Contains 1 SH2 domain.,subunit:Interacts with the Trk receptors in a phosphotyrosine-dependent manner. Once activated, binds to GRB2. Interacts with activated EGF receptors.,tissue specificity:Mainly expressed in brain. Hardly detectable in other

Nanjing BYabscience technology Co.,Ltd



tissues, except in pancreas. Highly expressed in the cerebral cortex, frontal and temporal lobes, occipital pole, hippocampus, caudate nucleus and amygdala. Expressed at low level in the cerebellum, medulla and spinal cord.,

Background

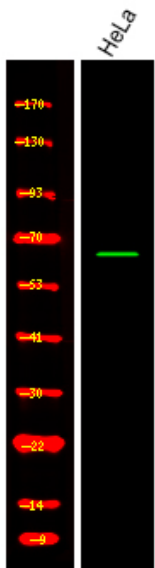
matters needing attention

Avoid repeated freezing and thawing!

Usage suggestions

This product can be used in immunological reaction related experiments. For more information, please consult technical personnel.

Products Images



Western Blot analysis of various,using primary antibody at 1:1000 dilution. Secondary antibody(catalog#:RS23920) was diluted at 1:10000