



Gz- α (Phospho-Ser16) rabbit pAb

| | |
|---------------------------|---|
| Catalog No | BYab-10536 |
| Isotype | IgG |
| Reactivity | Human; Mouse;Rat |
| Applications | WB |
| Gene Name | GNAZ |
| Protein Name | Gz- α (Phospho-Ser16) |
| Immunogen | Synthesized peptide derived from human Gz- α (Phospho-Ser16) |
| Specificity | This antibody detects endogenous levels of Gz- α (Phospho-Ser16) at Human, Mouse,Rat |
| Formulation | Liquid in PBS containing 50% glycerol, and 0.192% sodium azide. |
| Source | Polyclonal, Rabbit,IgG |
| Purification | The antibody was affinity-purified from rabbit serum by affinity-chromatography using specific immunogen. |
| Dilution | WB 1:500-2000 |
| Concentration | 1 mg/ml |
| Purity | $\geq 90\%$ |
| Storage Stability | -20°C/1 year |
| Synonyms | Guanine nucleotide-binding protein G(z) subunit alpha (G(x) alpha chain) (Gz-alpha) |
| Observed Band | 41kD |
| Cell Pathway | Membrane; Lipid-anchor. |
| Tissue Specificity | Brain,PNS, |
| Function | function:Guanine nucleotide-binding proteins (G proteins) are involved as modulators or transducers in various transmembrane signaling systems.,similarity:Belongs to the G-alpha family. G(i/o/t/z) subfamily.,subunit:G proteins are composed of 3 units; alpha, beta and gamma. The alpha chain contains the guanine nucleotide binding site., |
| Background | G protein subunit alpha z(GNAZ) Homo sapiens The protein encoded by this gene is a member of a G protein subfamily that mediates signal transduction in pertussis toxin-insensitive systms. This encoded protein may play a role in maintaining the ionic balance of perilymphatic and endolymphatic cochlear fluids. [provided by RefSeq, Jul 2008], |

Nanjing BYabscience technology Co.,Ltd



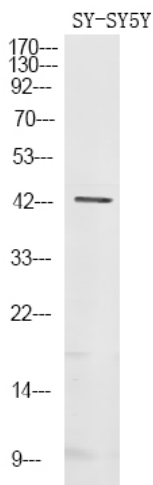
matters needing attention

Avoid repeated freezing and thawing!

Usage suggestions

This product can be used in immunological reaction related experiments. For more information, please consult technical personnel.

Products Images



Western Blot analysis of SY-SY5Y using primary antibody at 1:1000 dilution 4°C, overnight. Secondary antibody(catalog#:RS23920) was diluted at 1:10000 25 °C, 1.5hours