



TPPP (Phospho-Ser18) rabbit pAb

Catalog No	BYab-10523
Isotype	IgG
Reactivity	Human; Mouse;Rat
Applications	WB
Gene Name	TPPP TPPP1
Protein Name	TPPP (Phospho-Ser18)
Immunogen	Synthesized peptide derived from human TPPP (Phospho-Ser18)
Specificity	This antibody detects endogenous levels of TPPP (Phospho-Ser18) at Human, Mouse,Rat
Formulation	Liquid in PBS containing 50% glycerol, and 0.179% sodium azide.
Source	Polyclonal, Rabbit,IgG
Purification	The antibody was affinity-purified from rabbit serum by affinity-chromatography using specific immunogen.
Dilution	WB 1:500-2000
Concentration	1 mg/ml
Purity	≥90%
Storage Stability	-20°C/1 year
Synonyms	Tubulin polymerization-promoting protein (TPPP) (25 kDa brain-specific protein) (TPPP/p25) (p24) (p25-alpha)
Observed Band	
Cell Pathway	Golgi outpost . Cytoplasm, cytoskeleton, microtubule organizing center . Cytoplasm, cytoskeleton . Nucleus . Cytoplasm, cytoskeleton, spindle . Specifically localizes to the postsynaptic Golgi apparatus region, also named Golgi outpost, which shapes dendrite morphology by functioning as sites of acentrosomal microtubule nucleation (By similarity). Mainly localizes to the cytoskeleton (PubMed:18028908). Also found in the nucleus; however, nuclear localization is unclear and requires additional evidences (PubMed:18028908). Localizes to glial Lewy bodies in the brains of individuals with synucleinopathies (PubMed:15590652, PubMed:17027006). During mitosis, colocalizes with LIMK2 at the mitotic spindle (PubMed:22328514). .
Tissue Specificity	Widely expressed.
Function	function:Promotes in vitro the polymerization of tubulin into double-walled tubules and polymorphic aggregates or bundled stabilized microtubules blocks. When overexpressed, inhibits mitotic spindle assembly and nuclear envelope

Nanjing BYabscience technology Co.,Ltd



breakdown, apparently without affecting other cellular events.,PTM:Phosphorylated by TPK II. Poor substrate for GSK3.,similarity:Belongs to the TPPP family.,subunit:May form dimers. Binds tubulin; binding is inhibited by GTP. Interacts with GSK3.,tissue specificity:Widely expressed.,

Background

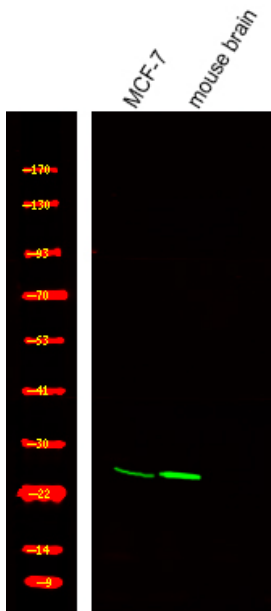
matters needing attention

Avoid repeated freezing and thawing!

Usage suggestions

This product can be used in immunological reaction related experiments. For more information, please consult technical personnel.

Products Images



Western Blot analysis of various,using primary antibody at 1:1000 dilution. Secondary antibody(catalog#:RS23920) was diluted at 1:10000