



NuaK1 (Phospho-Ser600) rabbit pAb

Catalog No	BYab-10501
Isotype	IgG
Reactivity	Human; Mouse;Rat
Applications	WB
Gene Name	NUAK1 ARK5 KIAA0537 OMPHK1
Protein Name	NuaK1 (Phospho-Ser600)
Immunogen	Synthesized peptide derived from human NuaK1 (Phospho-Ser600)
Specificity	This antibody detects endogenous levels of NuaK1 (Phospho-Ser600) at Human, Mouse,Rat
Formulation	Liquid in PBS containing 50% glycerol, and 0.157% sodium azide.
Source	Polyclonal, Rabbit,IgG
Purification	The antibody was affinity-purified from rabbit serum by affinity-chromatography using specific immunogen.
Dilution	WB 1:500-2000
Concentration	1 mg/ml
Purity	≥90%
Storage Stability	-20°C/1 year
Synonyms	NUAK family SNF1-like kinase 1 (EC 2.7.11.1) (AMPK-related protein kinase 5) (ARK5) (Omphalocele kinase 1)
Observed Band	
Cell Pathway	Nucleus . Cytoplasm .
Tissue Specificity	Expressed at high levels in heart and brain, and at lower levels in skeletal muscle, kidney, ovary, placenta, lung and liver. Highly up-regulated in colorectal cancer cell lines.
Function	catalytic activity:ATP + a protein = ADP + a phosphoprotein.,cofactor:Magnesium.,enzyme regulation:Activated by PKB/AKT1 during glucose starvation. Activated by phosphorylation on Thr-211 by STK11 in complex with STE20-related adapter-alpha (STRAD alpha) pseudo kinase and CAB39.,function:Involved in tolerance to glucose starvation. Phosphorylates ATM. Suppresses Fas-induced apoptosis by phosphorylation of CASP6, thus suppressing the activation of the caspase and the subsequent cleavage of CFLAR.,similarity:Belongs to the protein kinase superfamily.,similarity:Belongs to the protein kinase superfamily. CAMK Ser/Thr protein kinase family. SNF1 subfamily.,similarity:Contains 1 protein kinase domain.,tissue

Nanjing BYabscience technology Co.,Ltd



specificity: Expressed at high levels in heart and brain, and at lower levels in skeletal muscle, kidney, ovary, placenta, lung and liver.,

Background

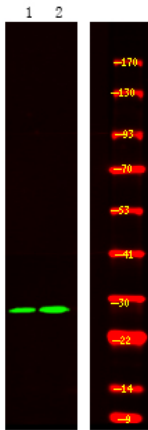
matters needing attention

Avoid repeated freezing and thawing!

Usage suggestions

This product can be used in immunological reaction related experiments. For more information, please consult technical personnel.

Products Images



Western Blot analysis of mouse brain and rat brain, using primary antibody at 1:1000 dilution. Secondary antibody (catalog#: RS23920) was diluted at 1:10000.

Nanjing BYabscience technology Co.,Ltd