



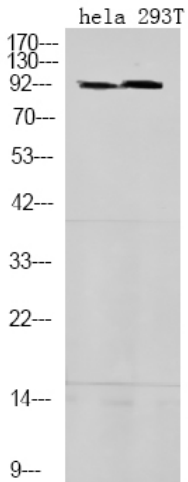
STAT5A/B (Phospho-Ser725/730) rabbit pAb

Catalog No	BYab-10500
Isotype	IgG
Reactivity	Human; Mouse;Rat
Applications	WB
Gene Name	STAT5A STAT5
Protein Name	STAT5A/B (Phospho-Ser725/730)
Immunogen	Synthesized peptide derived from human STAT5A/B (Phospho-Ser725/730)
Specificity	This antibody detects endogenous levels of STAT5A/B (Phospho-Ser725/730) at Human, Mouse,Rat
Formulation	Liquid in PBS containing 50% glycerol, and 0.156% sodium azide.
Source	Polyclonal, Rabbit,IgG
Purification	The antibody was affinity-purified from rabbit serum by affinity-chromatography using specific immunogen.
Dilution	WB 1:500-2000
Concentration	1 mg/ml
Purity	≥90%
Storage Stability	-20°C/1 year
Synonyms	Signal transducer and activator of transcription 5A
Observed Band	
Cell Pathway	Cytoplasm . Nucleus . Translocated into the nucleus in response to phosphorylation.
Tissue Specificity	Brain,Cervix,Epithelium,Lung,Placenta,Synovial memb
Function	
Background	
matters needing attention	Avoid repeated freezing and thawing!
Usage suggestions	This product can be used in immunological reaction related experiments. For more information, please consult technical personnel.

Nanjing BYabscience technology Co.,Ltd



Products Images



Western Blot analysis of hela 293T using primary antibody at 1:1000 dilution 4°C, overnight. Secondary antibody(catalog#:RS23920) was diluted at 1:10000 25 °C, 1.5hours