



# QIK/QSK (Phospho-Thr175/163) rabbit pAb

<b>Catalog No</b>	BYab-10460
<b>Isotype</b>	IgG
<b>Reactivity</b>	Human; Mouse;Rat
<b>Applications</b>	WB
<b>Gene Name</b>	SIK2 KIAA0781 QIK SNF1LK2
<b>Protein Name</b>	QIK/QSK (Phospho-Thr175/163)
<b>Immunogen</b>	Synthesized peptide derived from human QIK/QSK (Phospho-Thr175/163)
<b>Specificity</b>	This antibody detects endogenous levels of QIK/QSK (Phospho-Thr175/163) at Human, Mouse,Rat
<b>Formulation</b>	Liquid in PBS containing 50% glycerol, and 0.114% sodium azide.
<b>Source</b>	Polyclonal, Rabbit,IgG
<b>Purification</b>	The antibody was affinity-purified from rabbit serum by affinity-chromatography using specific immunogen.
<b>Dilution</b>	WB 1:500-2000
<b>Concentration</b>	1 mg/ml
<b>Purity</b>	≥90%
<b>Storage Stability</b>	-20°C/1 year
<b>Synonyms</b>	Serine/threonine-protein kinase SIK2 (EC 2.7.11.1) (Qin-induced kinase) (Salt-inducible kinase 2) (SIK-2) (Serine/threonine-protein kinase SNF1-like kinase 2)
<b>Observed Band</b>	105kD
<b>Cell Pathway</b>	Cytoplasm . Endoplasmic reticulum membrane .
<b>Tissue Specificity</b>	Brain,Colon,Lung,Testis,
<b>Function</b>	catalytic activity:ATP + a protein = ADP + a phosphoprotein.,cofactor:Magnesium.,enzyme regulation:Activated by phosphorylation on Thr-175 by STK11 in complex with STE20-related adapter-alpha (STRAD alpha) pseudo kinase and CAB39.,function:Phosphorylates 'Ser-794' of IRS1 in insulin-stimulated adipocytes, potentially modulating the efficiency of insulin signal transduction. Inhibits CREB activity by phosphorylating and repressing TORCs, the CREB-specific coactivators.,similarity:Belongs to the protein kinase superfamily. CAMK Ser/Thr protein kinase family. AMPK subfamily.,similarity:Contains 1

Nanjing BYabscience technology Co.,Ltd



protein kinase domain.,similarity:Contains 1 UBA domain.,subunit:Interacts with and phosphorylates TORC2/CRTC2.,

### Background

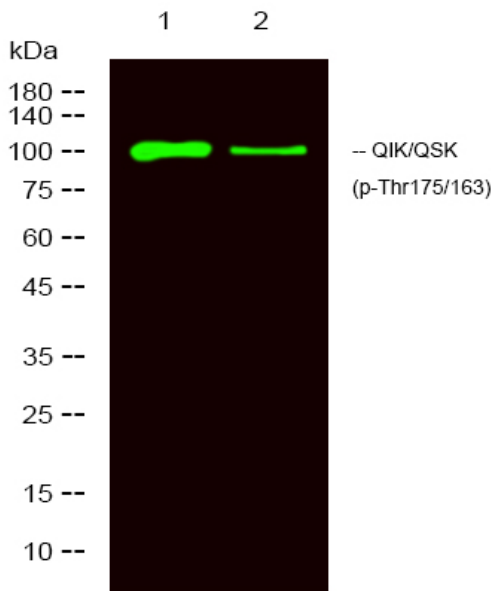
### matters needing attention

Avoid repeated freezing and thawing!

### Usage suggestions

This product can be used in immunological reaction related experiments. For more information, please consult technical personnel.

## Products Images



Western Blot analysis of 1 HeLa, 2 treated with LPS 100ng/mL 20min, using primary antibody at 1:1000 dilution. Secondary antibody(catalog#:RS23920) was diluted at 1:10000

Nanjing BYabscience technology Co.,Ltd