



# LRP6 (Phospho Thr1479) rabbit pAb

<b>Catalog No</b>	BYab-10427
<b>Isotype</b>	IgG
<b>Reactivity</b>	Human;Mouse
<b>Applications</b>	WB;ELISA;IHC
<b>Gene Name</b>	LRP6
<b>Protein Name</b>	LRP6 (Phospho Thr1479)
<b>Immunogen</b>	Synthesized peptide derived from human LRP6 (Phospho Thr1479)
<b>Specificity</b>	This antibody detects endogenous levels of Human,Mouse LRP6 (Phospho Thr1479)
<b>Formulation</b>	Liquid in PBS containing 50% glycerol, 0.5% BSA and 0.02% sodium azide.
<b>Source</b>	Polyclonal, Rabbit,IgG
<b>Purification</b>	The antibody was affinity-purified from rabbit serum by affinity-chromatography using specific immunogen.
<b>Dilution</b>	WB 1:500-2000;IHC-p 1:50-300; ELISA 2000-20000
<b>Concentration</b>	1 mg/ml
<b>Purity</b>	≥90%
<b>Storage Stability</b>	-20°C/1 year
<b>Synonyms</b>	Low-density lipoprotein receptor-related protein 6 (LRP-6)
<b>Observed Band</b>	177kD
<b>Cell Pathway</b>	Cell membrane ; Single-pass type I membrane protein. Endoplasmic reticulum . Membrane raft . On Wnt signaling, undergoes a cycle of caveolin- or clathrin-mediated endocytosis and plasma membrane location. Released from the endoplasmic reticulum on palmitoylation. Mono-ubiquitination retains it in the endoplasmic reticulum in the absence of palmitoylation. On Wnt signaling, phosphorylated, aggregates and colocalizes with AXIN1 and GSK3B at the plasma membrane in LRP6-signalsomes. Chaperoned to the plasma membrane by MESD (By similarity). .
<b>Tissue Specificity</b>	Widely coexpressed with LRP5 during embryogenesis and in adult tissues.
<b>Function</b>	disease:Defects in LRP6 are the cause of autosomal dominant coronary artery disease type 2 (ADCAD2) [MIM:610947].,domain:The YWTD-EGF-like domains 1 and 2 are required for the interaction with Wnt-frizzled complex. The YWTD-EGF-like domains 3 and 4 are required for the interaction with DKK1.,function:Essential for the Wnt/beta catenin signaling pathway, probably by

Nanjing BYabscience technology Co.,Ltd



acting as a coreceptor together with Frizzled for Wnt. Specific high-affinity receptor for DKK1 and DKK2, but not DKK3. The interaction with DKK1 blocks LRP6-mediated Wnt/beta catenin signaling via LRP6 removal via Kremen proteins-mediated endocytosis.,similarity:Belongs to the LDLR family.,similarity:Contains 20 LDL-receptor class B repeats.,similarity:Contains 3 LDL-receptor class A domains.,similarity:Contains 4 EGF-like domains.,subunit:Interacts with RSPO1 and RSPO3 (By similarity). Interacts with FZD5. Essential componen

### Background

This gene encodes a member of the low density lipoprotein (LDL) receptor gene family. LDL receptors are transmembrane cell surface proteins involved in receptor-mediated endocytosis of lipoprotein and protein ligands. The protein encoded by this gene functions as a receptor or, with Frizzled, a co-receptor for Wnt and thereby transmits the canonical Wnt/beta-catenin signaling cascade. Through its interaction with the Wnt/beta-catenin signaling cascade this gene plays a role in the regulation of cell differentiation, proliferation, and migration and the development of many cancer types. This protein undergoes gamma-secretase dependent RIP- (regulated intramembrane proteolysis) processing but the precise locations of the cleavage sites have not been determined.[provided by RefSeq, Dec 2009],

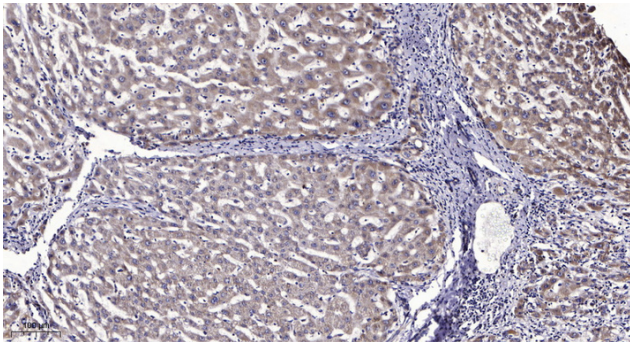
### matters needing attention

Avoid repeated freezing and thawing!

### Usage suggestions

This product can be used in immunological reaction related experiments. For more information, please consult technical personnel.

## Products Images



Immunohistochemical analysis of paraffin-embedded human liver cancer. 1, Antibody was diluted at 1:200(4° overnight). 2, Tris-EDTA,pH9.0 was used for antigen retrieval. 3,Secondary antibody was diluted at 1:200(room temperature, 45min).