



Kinesin-like Protein KIF1C (Phospho Ser1092) rabbit pAb

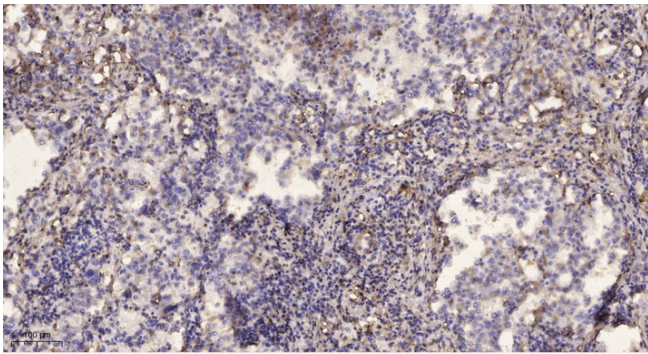
Catalog No	BYab-10422
Isotype	IgG
Reactivity	Human;Mouse;Rat
Applications	WB;IHC
Gene Name	KIF1C KIAA0706
Protein Name	Kinesin-like Protein KIF1C (Phospho Ser1092)
Immunogen	Synthesized peptide derived from human Kinesin-like Protein KIF1C (Phospho Ser1092)
Specificity	This antibody detects endogenous levels of Human,Mouse,Rat Kinesin-like Protein KIF1C (Phospho Ser1092)
Formulation	Liquid in PBS containing 50% glycerol, 0.5% BSA and 0.02% sodium azide.
Source	Polyclonal, Rabbit,IgG
Purification	The antibody was affinity-purified from rabbit serum by affinity-chromatography using specific immunogen.
Dilution	WB 1:500-2000;IHC-p 1:50-300
Concentration	1 mg/ml
Purity	≥90%
Storage Stability	-20°C/1 year
Synonyms	Kinesin-like protein KIF1C
Observed Band	121kD
Cell Pathway	Cytoplasm, cytoskeleton .
Tissue Specificity	Expressed in all tissues examined, with most abundant expression in heart and skeletal muscle.
Function	function:Motor required for the retrograde transport of Golgi vesicles to the endoplasmic reticulum. Has a microtubule plus end-directed motility.,PTM:Phosphorylated on tyrosine residues.,similarity:Belongs to the kinesin-like protein family. Unc-104 subfamily.,similarity:Contains 1 FHA domain.,similarity:Contains 1 kinesin-motor domain.,subunit:Monomer .,tissue specificity:Expressed in all tissues examined, with most abundant expression in heart and skeletal muscle.,

Nanjing BYabscience technology Co.,Ltd

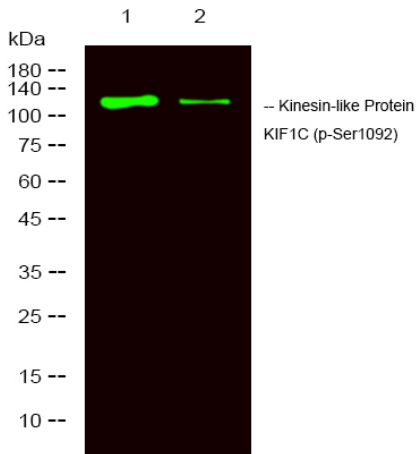


Background	kinesin family member 1C(KIF1C) Homo sapiens The protein encoded by this gene is a member of the kinesin-like protein family. The family members are microtubule-dependent molecular motors that transport organelles within cells and move chromosomes during cell division. Mutations in this gene are a cause of spastic ataxia 2, autosomal recessive. [provided by RefSeq, May 2014],
matters needing attention	Avoid repeated freezing and thawing!
Usage suggestions	This product can be used in immunological reaction related experiments. For more information, please consult technical personnel.

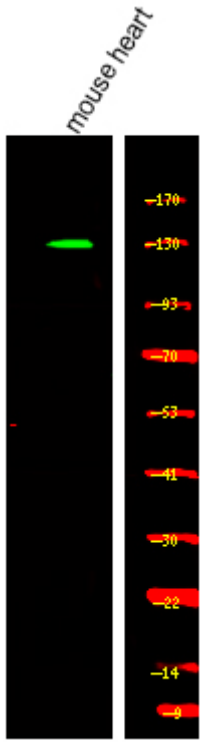
Products Images



Immunohistochemical analysis of paraffin-embedded human lung cancer. 1, Antibody was diluted at 1:200(4° overnight). 2, Tris-EDTA,pH9.0 was used for antigen retrieval. 3,Secondary antibody was diluted at 1:200(room temperature, 45min).



Western Blot analysis of mouse heart , rat heart,using primary antibody at 1:1000 dilution. Secondary antibody(catalog#:RS23920) was diluted at 1:10000



Western Blot analysis of various,using primary antibody at 1:1000 dilution. Secondary antibody(catalog#:RS23920) was diluted at 1:10000