



TAZ (phospho-Ser89) rabbit pAb

Catalog No	BYab-10414
Isotype	IgG
Reactivity	Human;Mouse;Rat
Applications	WB
Gene Name	WWTR1 TAZ
Protein Name	TAZ (Ser89)
Immunogen	Synthesized phospho peptide around human TAZ (Ser89)
Specificity	This antibody detects endogenous levels of Human Mouse Rat TAZ (phospho-Ser89)
Formulation	Liquid in PBS containing 50% glycerol, 0.5% BSA and 0.02% sodium azide.
Source	Polyclonal, Rabbit,IgG
Purification	The antibody was affinity-purified from rabbit serum by affinity-chromatography using specific immunogen.
Dilution	WB 1:1000-2000
Concentration	1 mg/ml
Purity	≥90%
Storage Stability	-20°C/1 year
Synonyms	WW domain-containing transcription regulator protein 1 (Transcriptional coactivator with PDZ-binding motif)
Observed Band	44kD
Cell Pathway	Nucleus . Cytoplasm . Cell membrane . Concentrates along specific portions of the plasma membrane, and accumulates in punctate nuclear bodies (By similarity). When phosphorylated, is retained in the cytoplasm by YWHAZ (By similarity). Can be retained in the nucleus by MED15 (PubMed:18568018). Localized in the cytoplasm in areas of epithelial cell high density (PubMed:21145499). At blastocyst stage expressed in the nucleus in trophectodermal cells, however expressed in the cytoplasm in the inner cell mass (By similarity). .
Tissue Specificity	Highly expressed in kidney, heart, placenta and lung. Expressed in the thyroid tissue.
Function	domain: Binds to transcription factors via its WW domain.,domain: The PDZ-binding motif is essential for stimulated gene transcription. It localizes the protein into both punctate nuclear foci and plasma membrane-associated complexes.,function: Functions as a transcriptional

Nanjing BYabscience technology Co.,Ltd



coactivator.,PTM:Phosphorylated. Phosphorylation results in the inhibition of transcriptional coactivation through YWHAZ-mediated nuclear export.,similarity:Contains 1 WW domain.,subcellular location:Concentrates along specific portions of the plasma membrane, and accumulates in punctate nuclear bodies. When phosphorylated, is retained in cytoplasm by YWHAZ.,subunit:Binds to SLC9A3R2 via the PDZ motif at the plasma membrane. Binds to YWHAZ in vivo and in vitro through the phosphoserine-binding motif RSHSSP.,tissue specificity:Highly expressed in kidney, heart, placenta and lung.,

Background

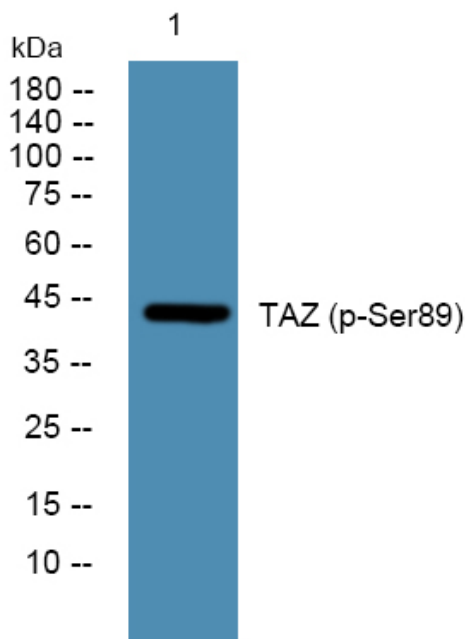
matters needing attention

Avoid repeated freezing and thawing!

Usage suggestions

This product can be used in immunological reaction related experiments. For more information, please consult technical personnel.

Products Images



Nanjing BYabscience technology Co.,Ltd