



Scribble (phospho-Ser1220) rabbit pAb

Catalog No	BYab-10405
Isotype	IgG
Reactivity	Human;Mouse
Applications	WB;ELISA;IHC
Gene Name	SCRIB CRIB1 KIAA0147 LAP4 SCRB1 VARTUL
Protein Name	Scribble (Ser1220)
Immunogen	Synthesized phospho peptide around human Scribble (Ser1220)
Specificity	This antibody detects endogenous levels of Human Mouse Scribble (phospho-Ser1220)
Formulation	Liquid in PBS containing 50% glycerol, 0.5% BSA and 0.02% sodium azide.
Source	Polyclonal, Rabbit,IgG
Purification	The antibody was affinity-purified from rabbit serum by affinity-chromatography using specific immunogen.
Dilution	WB 1:500-2000;IHC-p 1:50-300; ELISA 2000-20000
Concentration	1 mg/ml
Purity	≥90%
Storage Stability	-20°C/1 year
Synonyms	Protein scribble homolog (Scribble) (hScrib) (Protein LAP4)
Observed Band	179kD
Cell Pathway	Cell membrane ; Peripheral membrane protein. Cell junction . Cell junction, adherens junction. Cell projection, lamellipodium. Cytoplasm. Cell junction, synapse, postsynapse . Cell junction, synapse, presynapse . Targeting to cell-cell junctions which is CDH1-dependent is required for the pro-apoptotic activity. In a subset of CD4+ T-cells, colocalizes with CRTAM at the immunological synapse during the late phase of T-cell activation (By similarity). .
Tissue Specificity	Expressed in kidney, skeletal muscles, liver, lung, breast, intestine, placenta and skin mainly in epithelial cells (at protein level).
Function	similarity:Contains 4 PDZ (DHR) domains.,
Background	This gene encodes a protein that was identified as being similar to the Drosophila scribble protein. The mammalian protein is involved in tumor suppression pathways. As a scaffold protein involved in cell polarization processes, this protein binds to many other proteins. The encoded protein binds to papillomavirus E6 protein via its PDZ domain and the C-terminus of E6. Two

Nanjing BYabscience technology Co.,Ltd



alternatively spliced transcript variants that encode different protein isoforms have been found for this gene. [provided by RefSeq, Nov 2011],

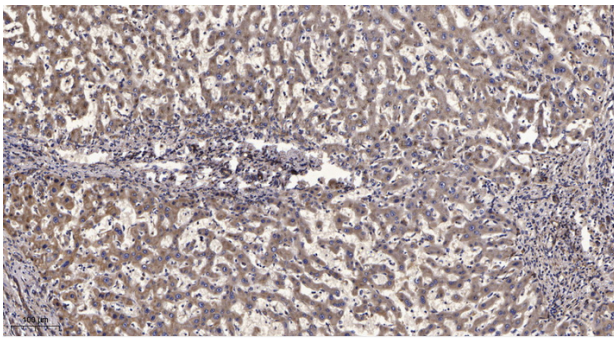
matters needing attention

Avoid repeated freezing and thawing!

Usage suggestions

This product can be used in immunological reaction related experiments. For more information, please consult technical personnel.

Products Images



Immunohistochemical analysis of paraffin-embedded human liver cancer. 1, Antibody was diluted at 1:200(4° overnight). 2, Tris-EDTA,pH9.0 was used for antigen retrieval. 3,Secondary antibody was diluted at 1:200(room temperature, 45min).