



SATB1 (phospho-Ser47) rabbit pAb

Catalog No	BYab-10404
Isotype	IgG
Reactivity	Human;Mouse;Rat
Applications	WB;ELISA;IHC
Gene Name	SATB1
Protein Name	SATB1 (Ser47)
Immunogen	Synthesized phospho peptide around human SATB1 (Ser47)
Specificity	This antibody detects endogenous levels of Human Mouse Rat SATB1 (phospho-Ser47)
Formulation	Liquid in PBS containing 50% glycerol, 0.5% BSA and 0.02% sodium azide.
Source	Polyclonal, Rabbit,IgG
Purification	The antibody was affinity-purified from rabbit serum by affinity-chromatography using specific immunogen.
Dilution	WB 1:500-2000;IHC-p 1:50-300; ELISA 2000-20000
Concentration	1 mg/ml
Purity	≥90%
Storage Stability	-20°C/1 year
Synonyms	DNA-binding protein SATB1 (Special AT-rich sequence-binding protein 1)
Observed Band	85kD
Cell Pathway	Nucleus matrix . Nucleus, PML body . Organized into a cage-like network anchoring loops of heterochromatin and tethering specialized DNA sequences (PubMed:12692553). When sumoylated, localized in promyelocytic leukemia nuclear bodies (PML NBs) (PubMed:18408014). .
Tissue Specificity	Expressed predominantly in thymus.
Function	function: Binds to DNA at special AT-rich sequences at nuclear matrix- or scaffold-associated regions. Thought to recognize the sugar-phosphate structure of double-stranded DNA.,PTM: Sumoylated.,similarity: Belongs to the CUT homeobox family.,similarity: Contains 1 homeobox DNA-binding domain.,similarity: Contains 2 CUT DNA-binding domains.,tissue specificity: Expressed predominantly in thymus.,
Background	This gene encodes a matrix protein which binds nuclear matrix and scaffold-associating DNAs through a unique nuclear architecture. The protein recruits chromatin-remodeling factors in order to regulate chromatin structure and

Nanjing BYabscience technology Co.,Ltd



gene expression. [provided by RefSeq, Apr 2016],

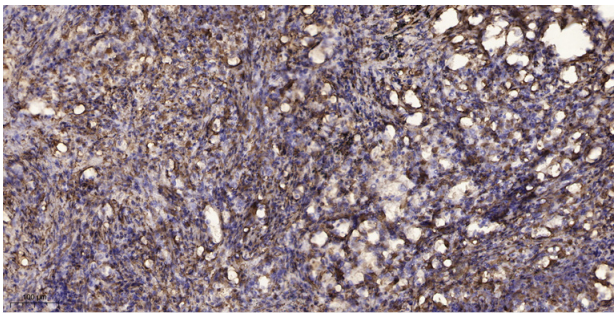
matters needing attention

Avoid repeated freezing and thawing!

Usage suggestions

This product can be used in immunological reaction related experiments. For more information, please consult technical personnel.

Products Images



Immunohistochemical analysis of paraffin-embedded human Squamous cell carcinoma of lung. 1, Antibody was diluted at 1:200(4° overnight). 2, Tris-EDTA,pH9.0 was used for antigen retrieval. 3,Secondary antibody was diluted at 1:200(room temperature, 45min).