



PPIG (phospho-Ser376) rabbit pAb

Catalog No	BYab-10392
Isotype	IgG
Reactivity	Human;Mouse;Rat
Applications	WB;IHC
Gene Name	PPIG
Protein Name	PPIG (Ser376)
Immunogen	Synthesized phospho peptide around human PPIG (Ser376)
Specificity	This antibody detects endogenous levels of Human Mouse Rat PPIG (phospho-Ser376)
Formulation	Liquid in PBS containing 50% glycerol, 0.5% BSA and 0.02% sodium azide.
Source	Polyclonal, Rabbit,IgG
Purification	The antibody was affinity-purified from rabbit serum by affinity-chromatography using specific immunogen.
Dilution	WB 1:500-2000;IHC-p 1:50-300
Concentration	1 mg/ml
Purity	≥90%
Storage Stability	-20°C/1 year
Synonyms	Peptidyl-prolyl cis-trans isomerase G (PPIase G) (Peptidyl-prolyl isomerase G) (EC 5.2.1.8) (CASP10) (Cik-associating RS-cyclophilin) (CARS-Cyp) (CARS-cyclophilin) (SR-cyclophilin) (SR-cyp) (SRcyp) (Cyclophilin G) (Rotamase G)
Observed Band	82kD
Cell Pathway	Nucleus matrix . Nucleus speckle . Colocalizes with RNA splicing factors at nuclear speckles. .
Tissue Specificity	Ubiquitous.
Function	catalytic activity:Peptidylproline (omega=180) = peptidylproline (omega=0).,domain:The RS domain is required for the interaction with the phosphorylated C-terminal domain of RNA polymerase II.,enzyme regulation:Cyclosporin A (CsA)-sensitive.,function:PPIases accelerate the folding of proteins.,function:PPIases accelerate the folding of proteins. It catalyzes the cis-trans isomerization of proline imidic peptide bonds in oligopeptides.,function:PPIases accelerate the folding of proteins. It catalyzes the cis-trans isomerization of proline imidic peptide bonds in oligopeptides. May be

Nanjing BYabscience technology Co.,Ltd



implicated in the folding, transport, and assembly of proteins. May play an important role in the regulation of pre-mRNA splicing.,PTM:Phosphorylated upon DNA damage, probably by ATM or ATR.,similarity:Belongs to the cyclophilin-type PPlase family.,similarity:Contains 1 PPlase cyclophilin-type domain.,subcell

Background

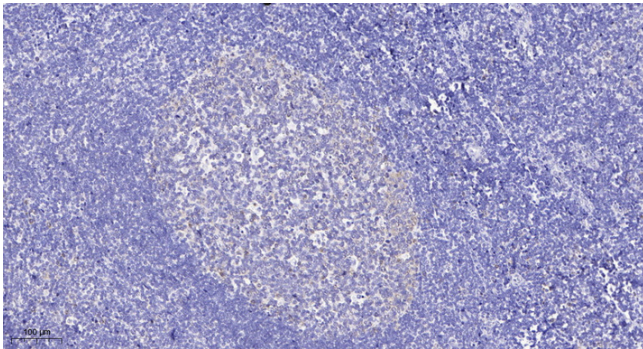
matters needing attention

Avoid repeated freezing and thawing!

Usage suggestions

This product can be used in immunological reaction related experiments. For more information, please consult technical personnel.

Products Images



Immunohistochemical analysis of paraffin-embedded human tonsil. 1, Antibody was diluted at 1:200(4° overnight). 2, Tris-EDTA,pH9.0 was used for antigen retrieval. 3,Secondary antibody was diluted at 1:200(room temperature, 45min).